

Pop-Up Cards Book *pdf version*

Pattern Sheets of Origamic Architecture

Volume 3

Special Occasions



Make your own pop-up cards now!



Copyright © 2010 AmazingPopup.com

All rights reserved.

14 patterns



www.AmazingPopup.com

Pop-up Cards Book (pdf version)

Volume 3

Special Occasions



AmazingPopUp.com



Welcome to the Wonderful World
of
Origami Architecture!

Contents

I. Instructions

1. Moon Night

2. Heart

3. Lovely Bear



4. Two Swans

5. Wedding Cake

6. Lovely Home

7. Little Church



8. Flower Bouquet

9. Birthday Cake

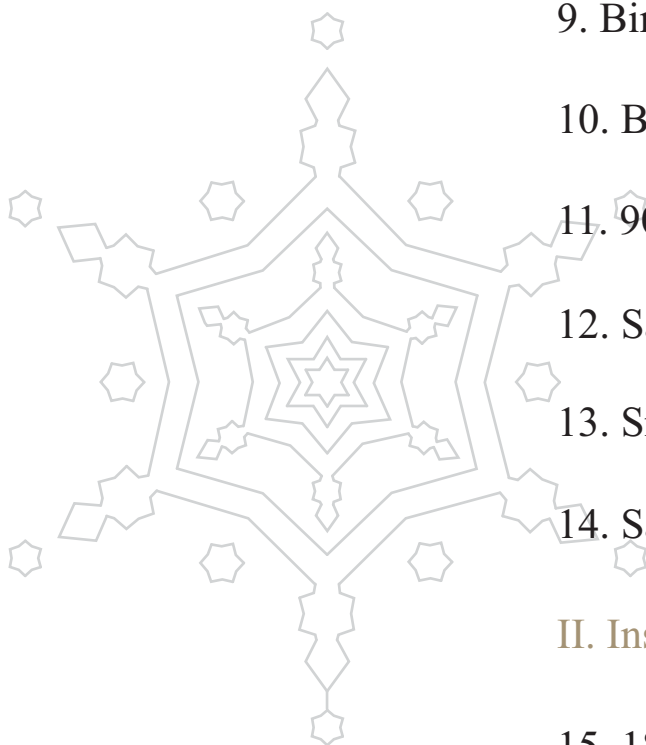
10. Birthday Cake(color)

11. 90° Christmas Tree

12. Santa Mouse

13. Snowflake

14. Santa & Reindeer



II. Instructions for 180° Christmas Tree

15. 180° Christmas Tree

I. Instructions

Apart from this pop-up cards ebook, please have the following materials prepared beforehand to proceed the handcrafting:

- ✧ Card paper (A4 or Letter-size, weighted around 160 – 200 grams)
- ✧ Plain paper (A4 or Letter-size for printing out pattern sheets)
- ✧ A printer

Please also be recommended to use the hand tools below:

- ✧ a very sharp knife (Xacto knife)
- ✧ a steel ruler
- ✧ a cutting mat (preferably with grid-lines)
- ✧ a pair of tweezers
- ✧ glue, tapes or double sided tapes

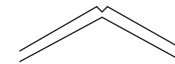
Legends

Note that there are 6 types of lines printed on the “Pattern Sheet” distinguishable of their respective functions:

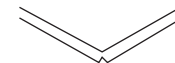
Black cut-line



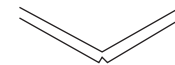
Mountain fold-line



Valley fold-line



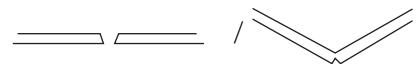
Main fold-line



Green cut-line(borderline)



Cut-line/Main fold-line



Step 1. Prepare the “Pattern Sheet”

✧ Select a card pattern and print it on a piece of plain paper as the “Pattern Sheet”.

Tips: (i) If you are new to this, please choose a simple pattern to start with first;

Step 2. Attach the “Pattern Sheet” to the card paper

✧ Place the “Pattern Sheet” on the card paper;

✧ Use tapes or double sided tapes to fix the “Pattern Sheet”. Note that the tape should be applied to the area outside the **green cut-line** which delineates the “**borderline**”.



Step 3. Handle the black cut-lines

✧ First, handle the cutouts;



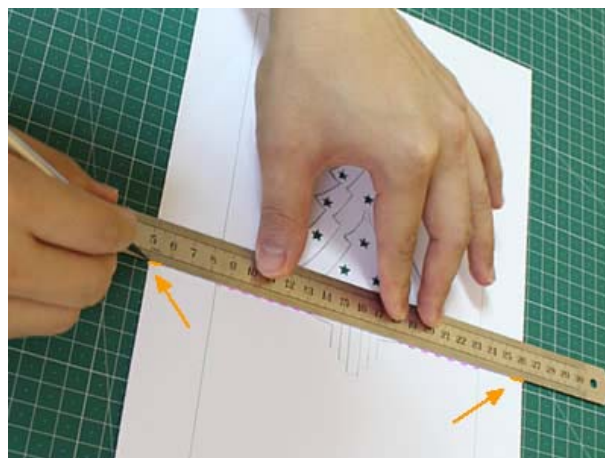
✧ Then cut all other **black cut-lines** along.

- Tips:
- (ii) Always use a new sharp blade;
 - (iii) Carefully and slowly follow the cut-lines to perform the cutting;
 - (iv) In some cases, several cuts are required for a curved line.

Step 4. Positioning and marking the main fold-lines

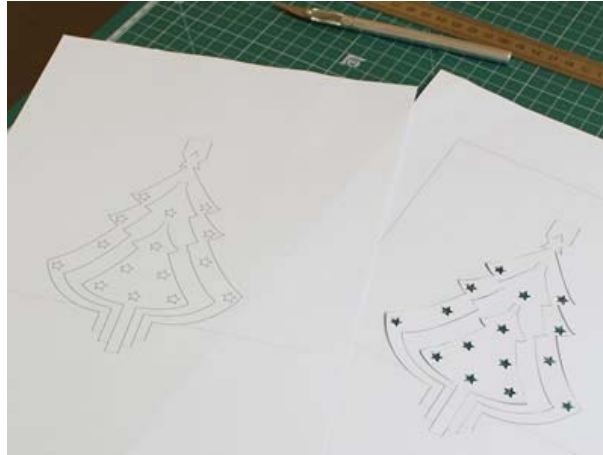
✧ Align the **main fold-lines** with a steel ruler;

✧ Cut a depth of **1mm – 2mm** from both of the paper edges by the steel ruler in alignment with the **main fold-lines** as illustrated in the picture below.



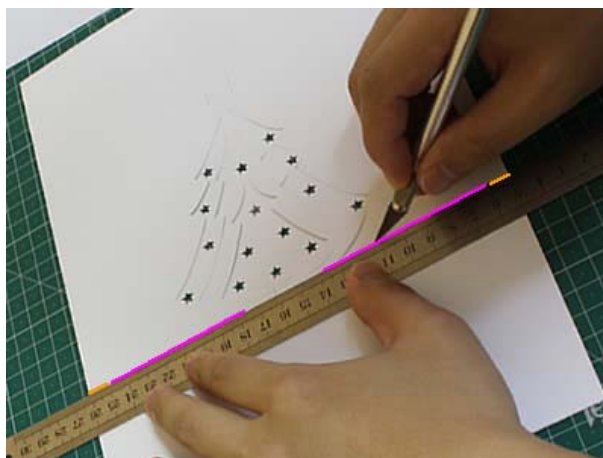
Step 5. Prepare the “Valley Flow-lines Pattern Sheet”

- ✧ Print the corresponding “Valley Flow-lines Pattern Sheet” on a piece of plain paper.

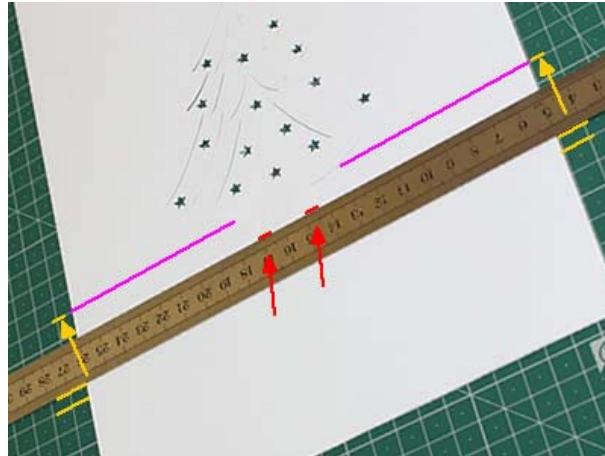


Step 6. Handle the valley fold-lines

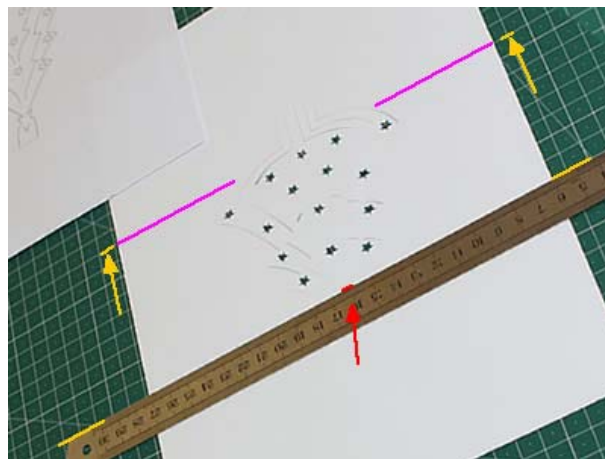
- ✧ By tracing the cutting track you have already created, and comparing it with the “Valley Flow-lines Pattern Sheet” printed in Step 5, you should be able to identify the position of the main fold-lines and those of the valley flow-lines on the back of the card paper;
- ✧ Remember that all valley fold-line cuts must be applied on the back of the card paper;
- ✧ Along the markings created in Step 4, half-cut the main fold-lines on the back of the card paper;



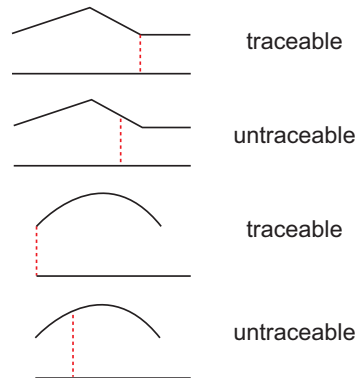
- ✧ If the cutting mat offers a grid, align the **main fold-lines** with a grid-line;
- ✧ **Half-cut** all other **valley flow-lines** in such a way that they all are **parallel** to the **main fold-lines** / grid-line.



- Tips:
- (v) A slightly sharp blade is preferred;
 - (vi) Some **valley fold-lines** can only be cut accurately by rotating the paper by 180°.

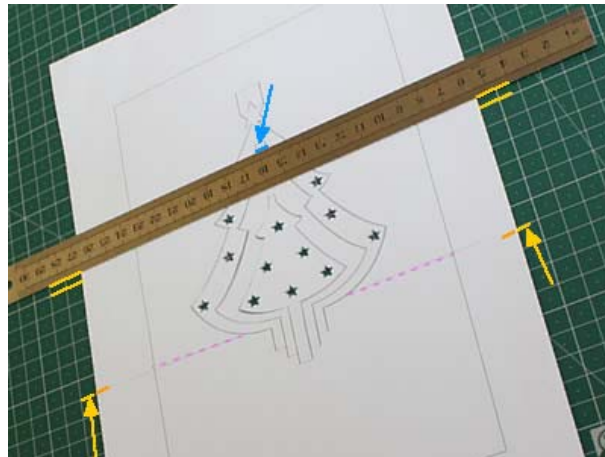


Tip: (vii) In case some **valley fold-lines** that cannot be identified precisely by tracing the cutting track, please apply the method of handling the **main fold-lines**.



Step7. Handle the **mountain fold-lines**

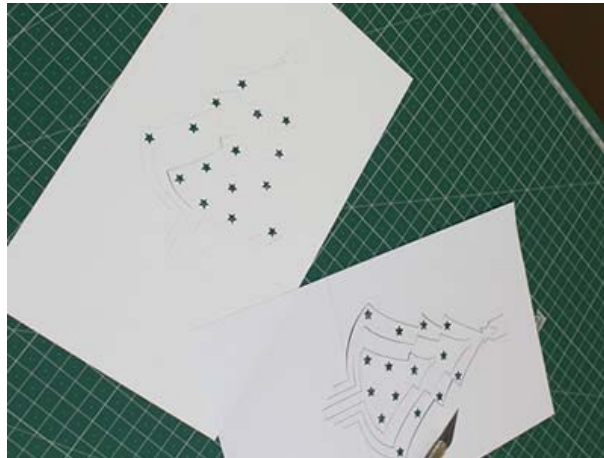
- ✧ If grid-lines are available on the cutting mat, align the **main fold-lines** with a grid-line;
- ✧ Remember that all **mountain fold-line cuts** must be applied on the **front** side of the “**Pattern Sheet**”;
- ✧ **Half-cut** all the **mountain flow-lines** parallel to the **main fold-lines**/ grid-line.



Tip: (viii) A slightly sharp blade is preferred.

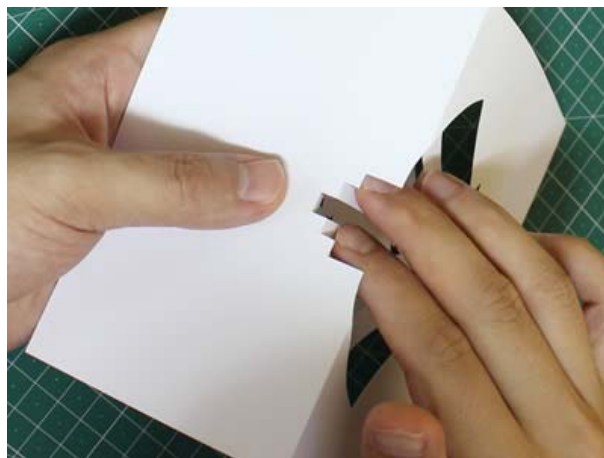
Step 8. Cut the green cut-line (“borderline”)

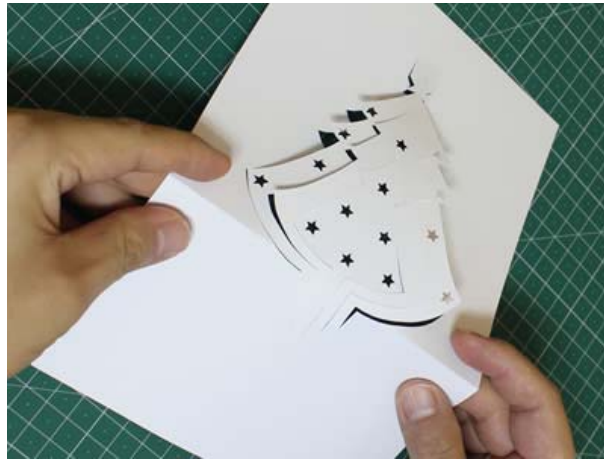
✧ Cut along the **green cut-line** or cut according to your preferred size.



Step 9. Fold the card model

- ✧ Before starting to fold, make sure that all cuts are well finished and all fold-lines are ready;
- ✧ As a preliminary step, try to slightly fold the left(top)-most **valley fold-line(s)**, the right(bottom)-most **valley fold-line(s)** and the **main fold-lines**;





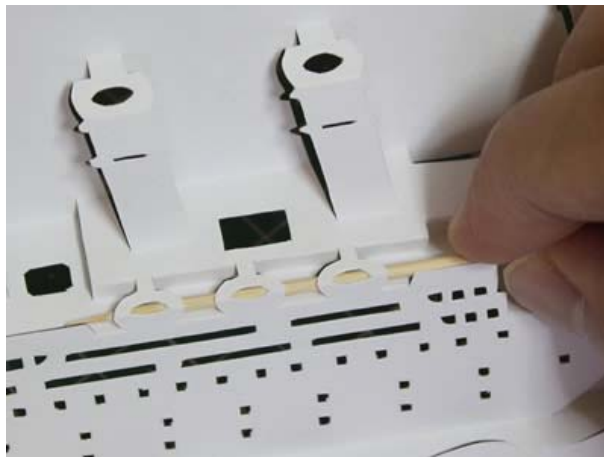
✧ **Patiently** and **gradually** fold all other fold-lines in their respective directions until the card model comes into shape.



Tip: (ix) Use a pair of tweezers to help folding.



Tip: (x) When two adjacent flow-lines are very close to each other, use a tiny rod to help stabilize the folding direction as shown in the picture below.



Tip: (xi) For some difficult card models, it is necessary to spend one hour or more to fold them in right form.

Step 10. Add a piece of “Color Base Paper”



- ✧ This is to hold firm the card model and also to add contrast to make the artwork more dimensionally appealing.

Pattern Sheets
of
Origami Architecture

1. Moon Night





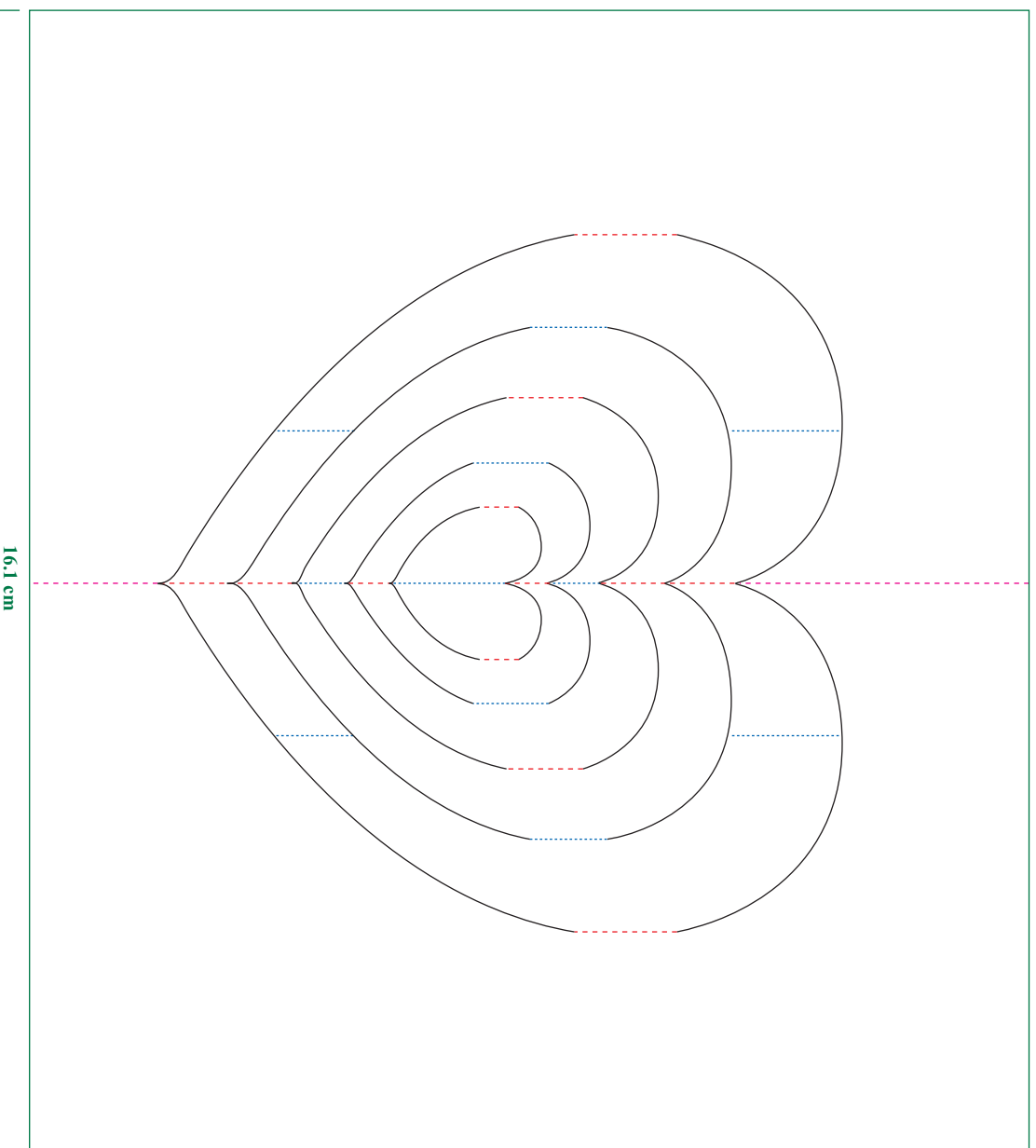
20 cm

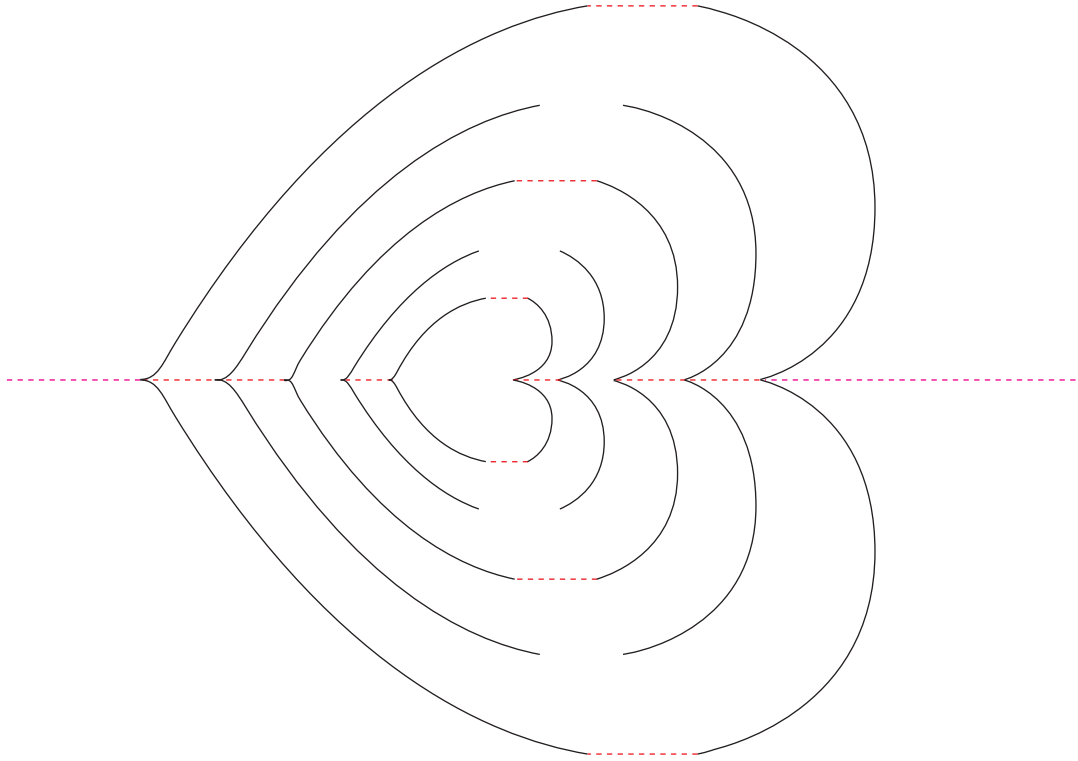


2. Heart



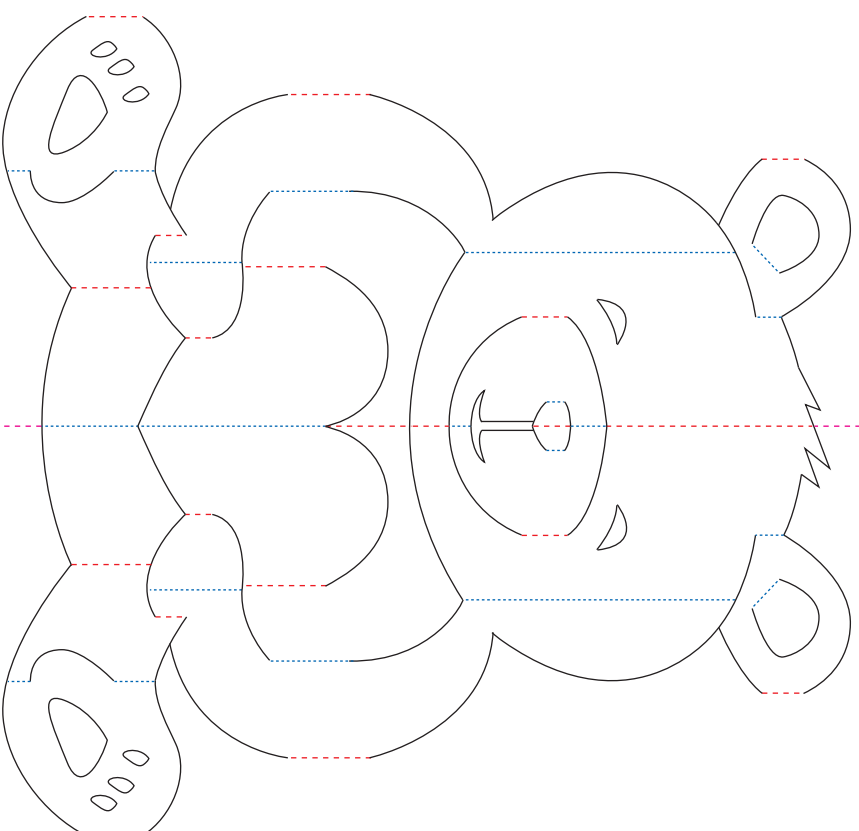
customer id: ly223@gmail.com



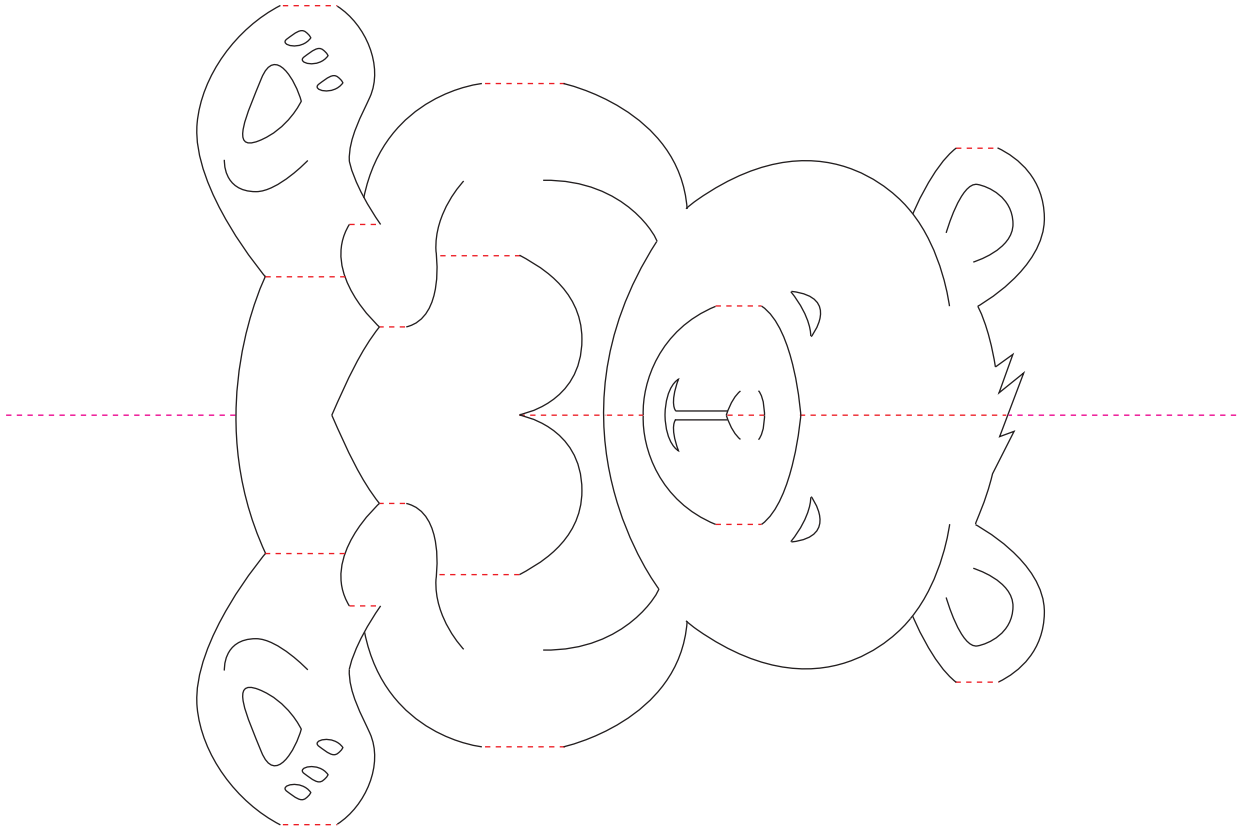


3. Lovely Bear



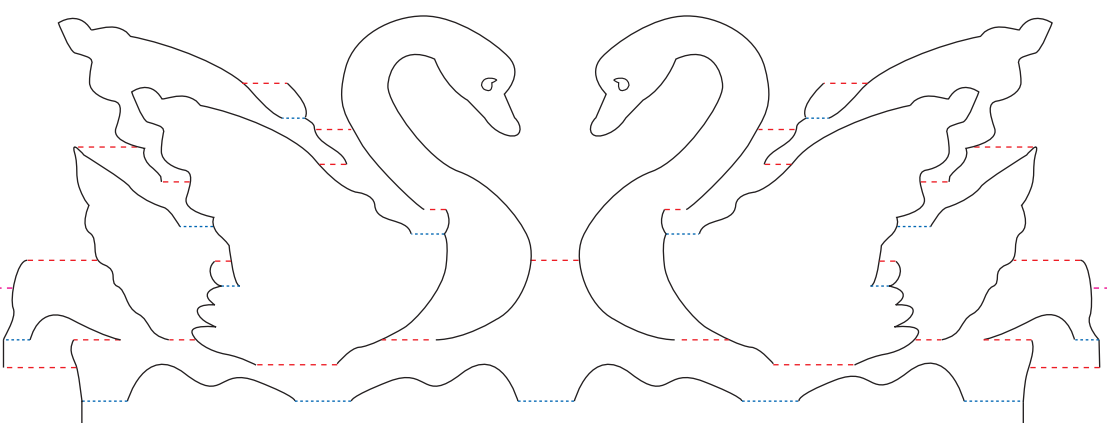


16,2 cm

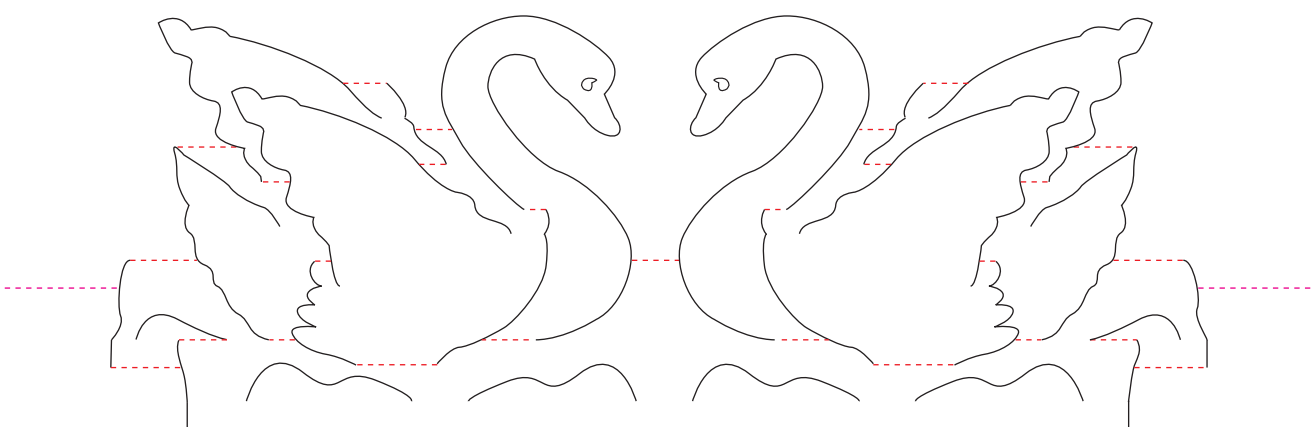


4. Two Swans



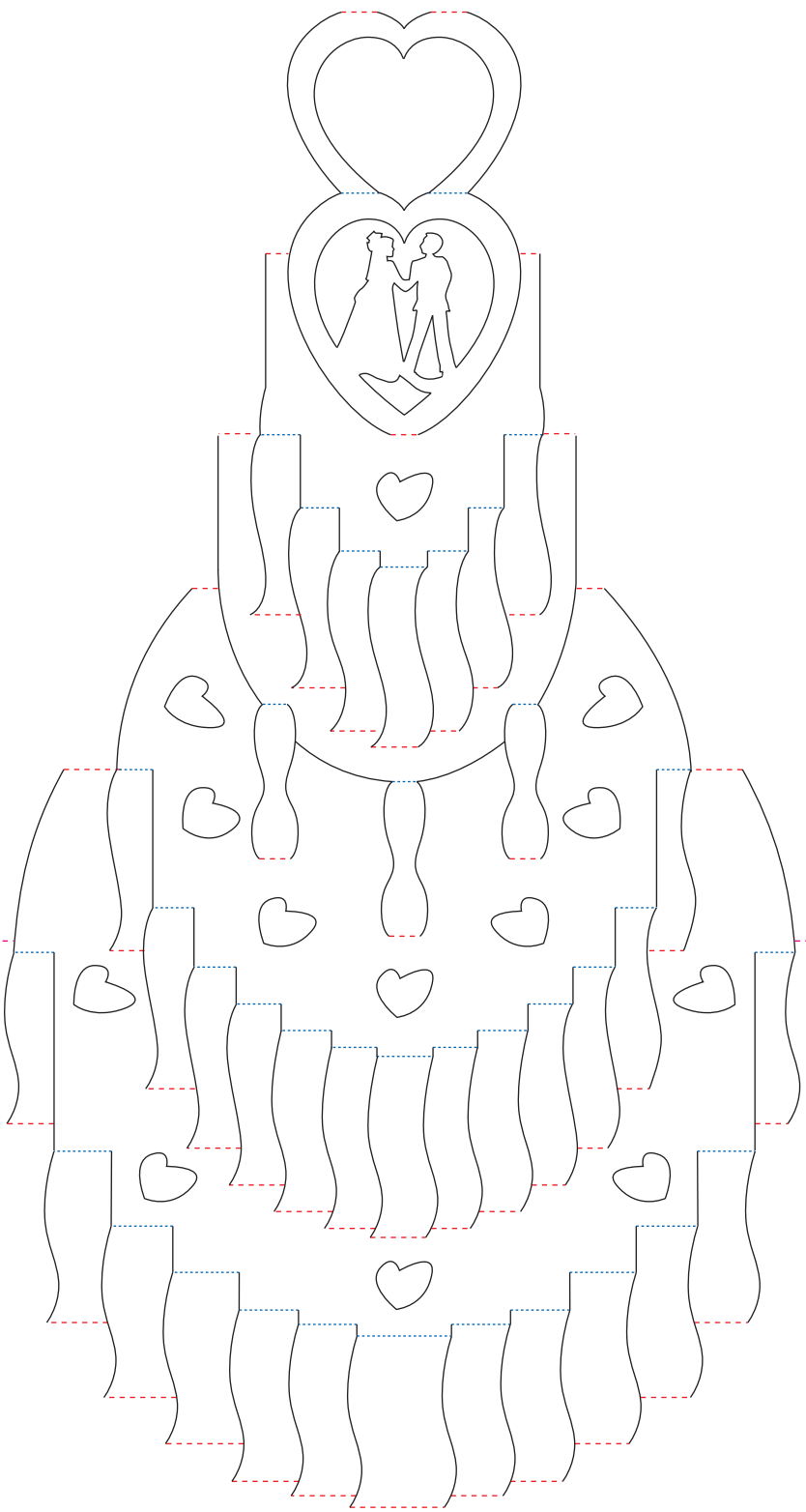


20 cm

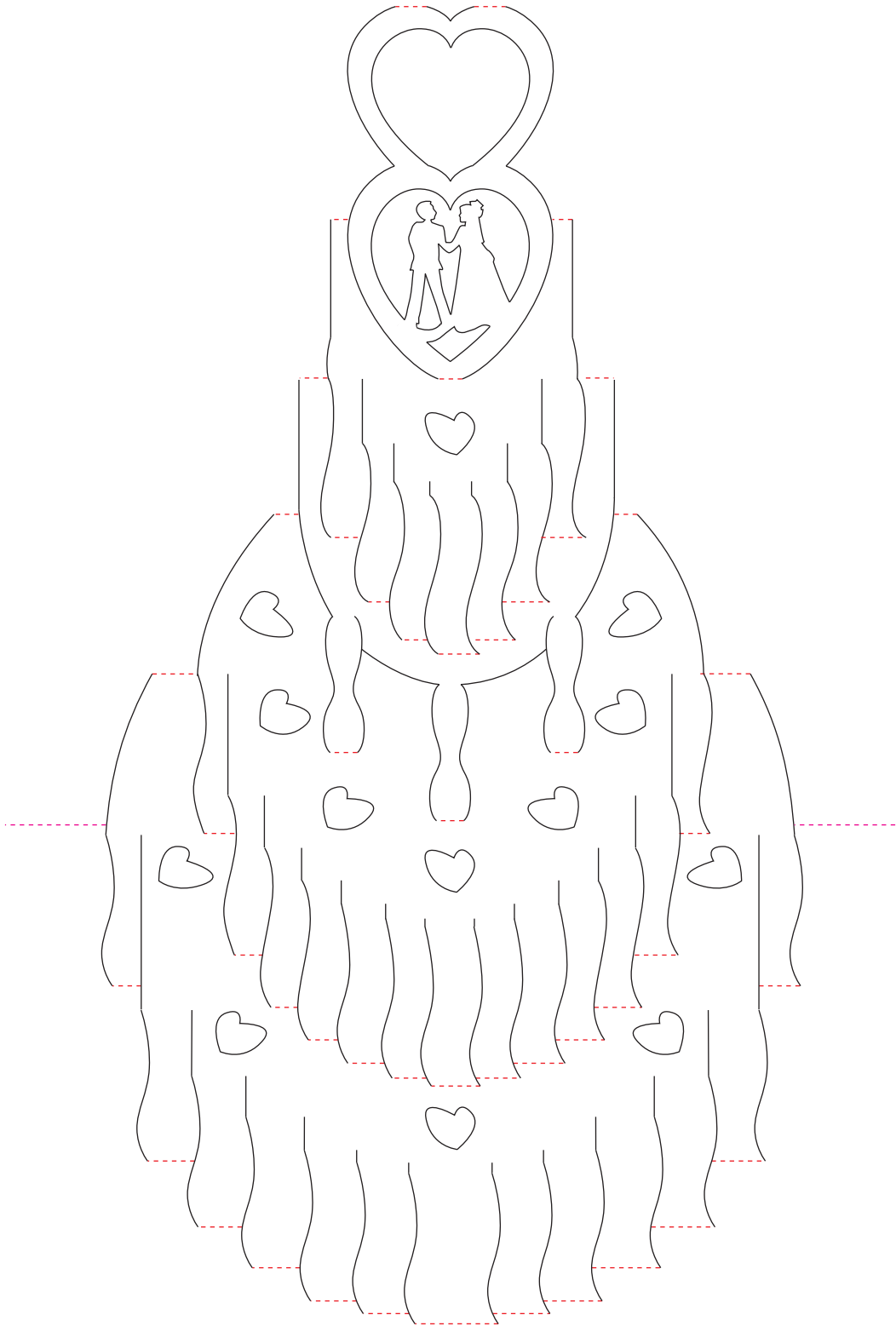


5. Wedding Cake



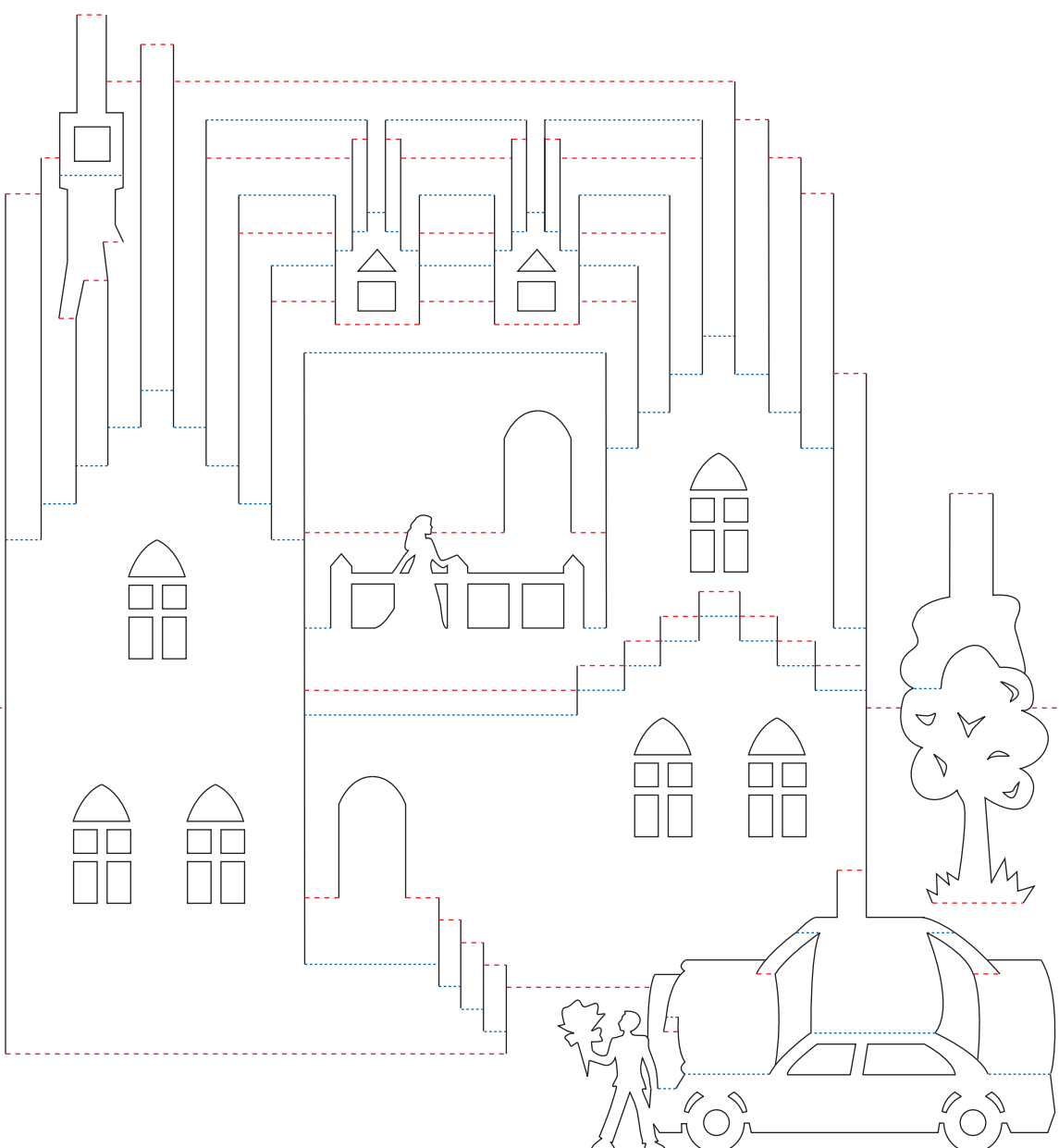


26.5 cm

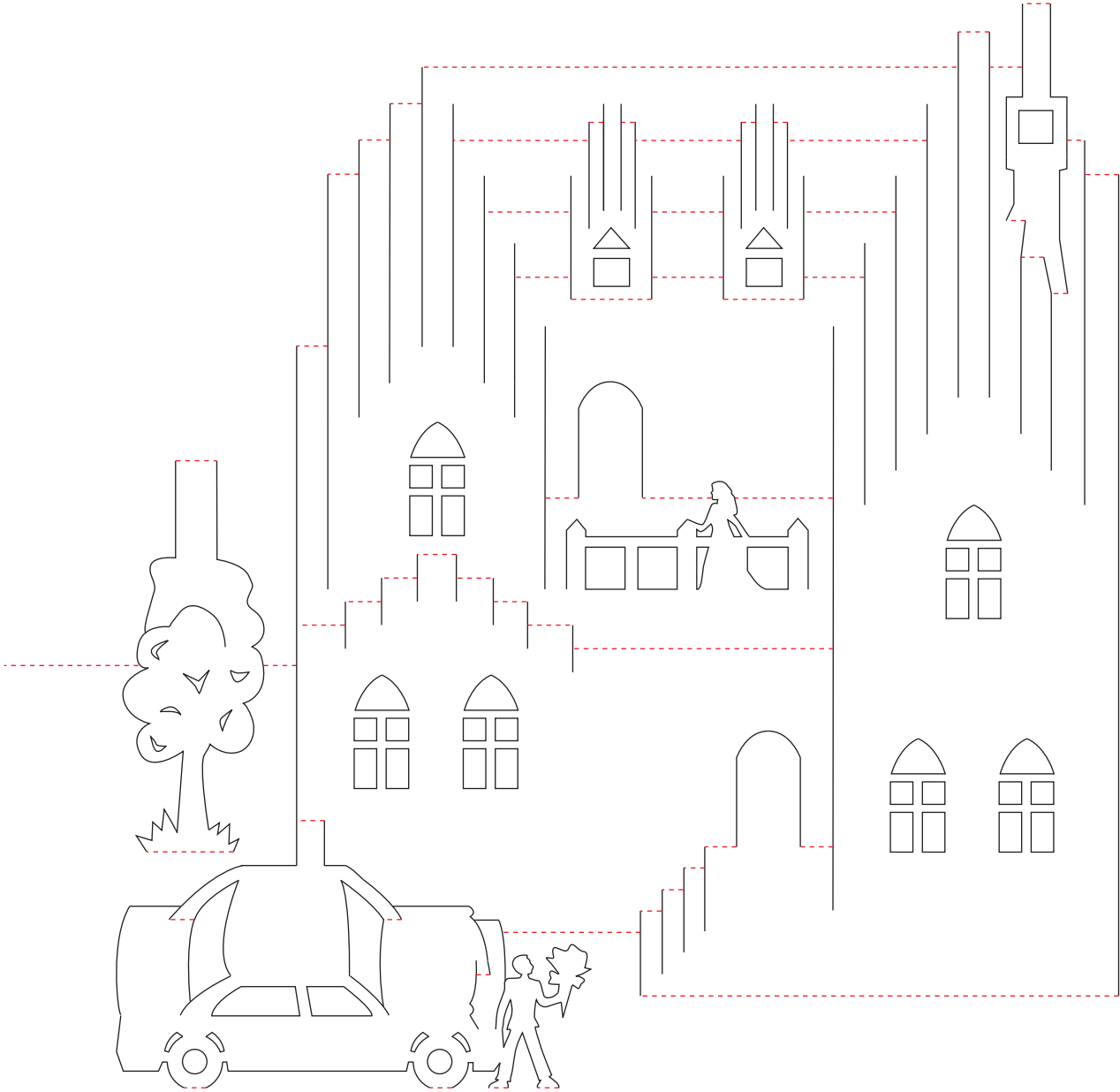


6. Lovely House



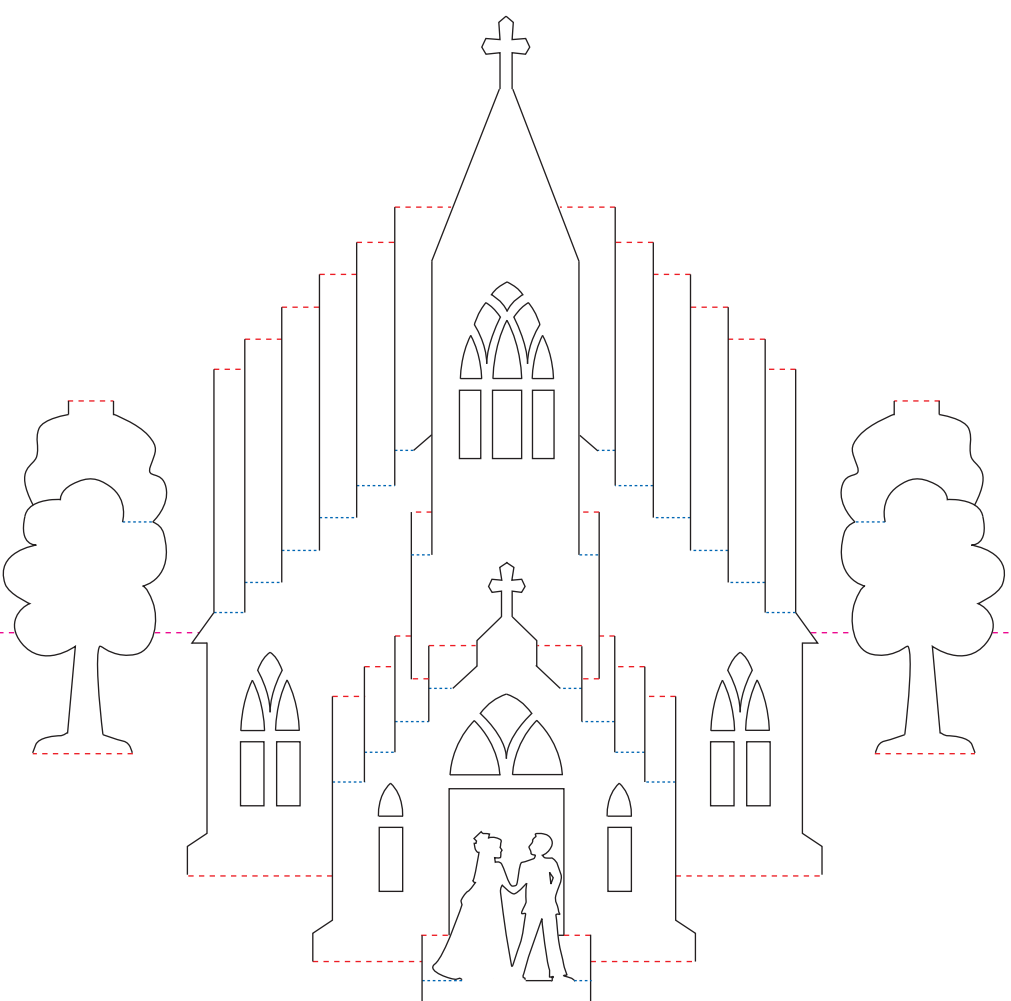


25 cm

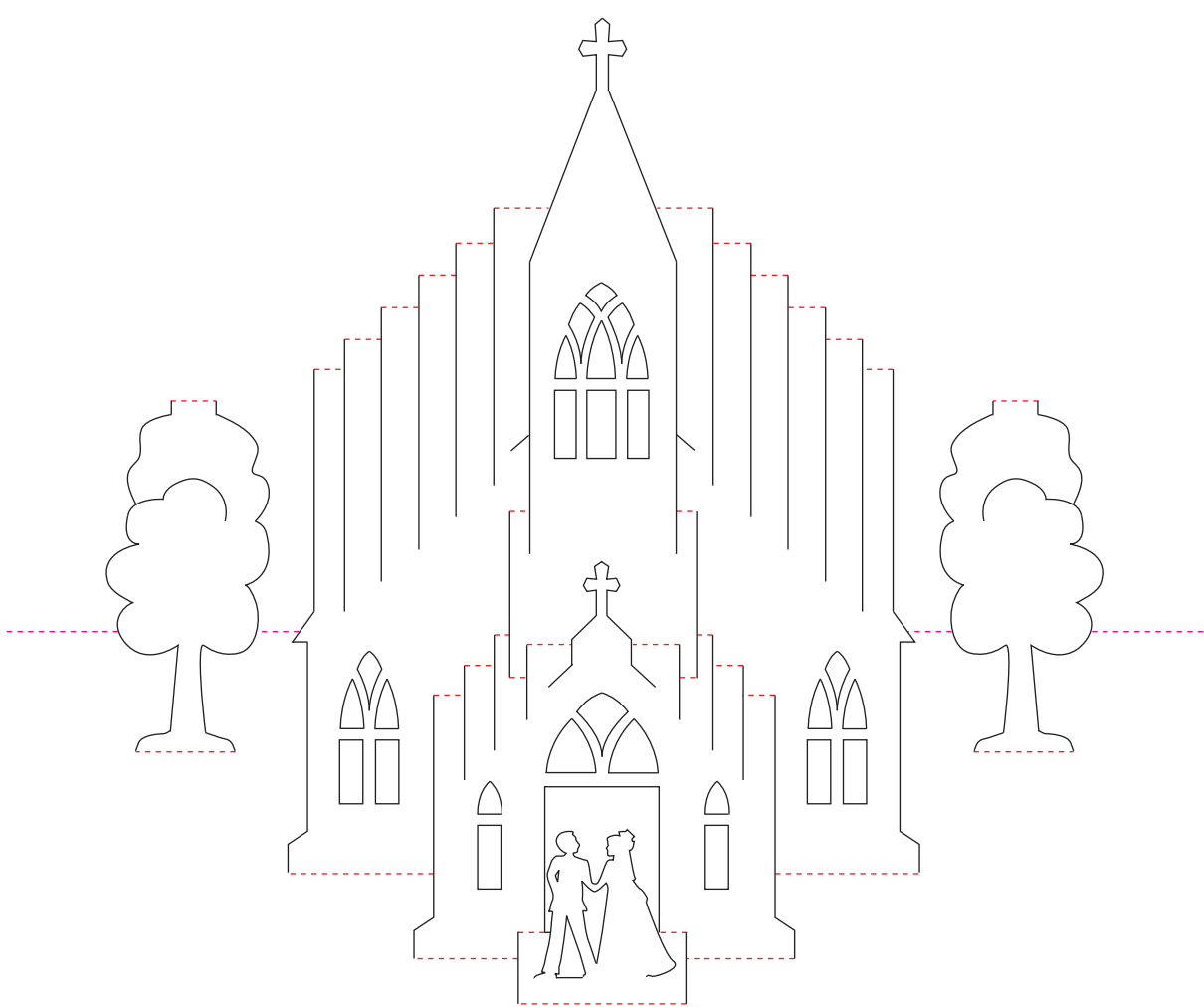


7. Little Church *Bride & Groom*



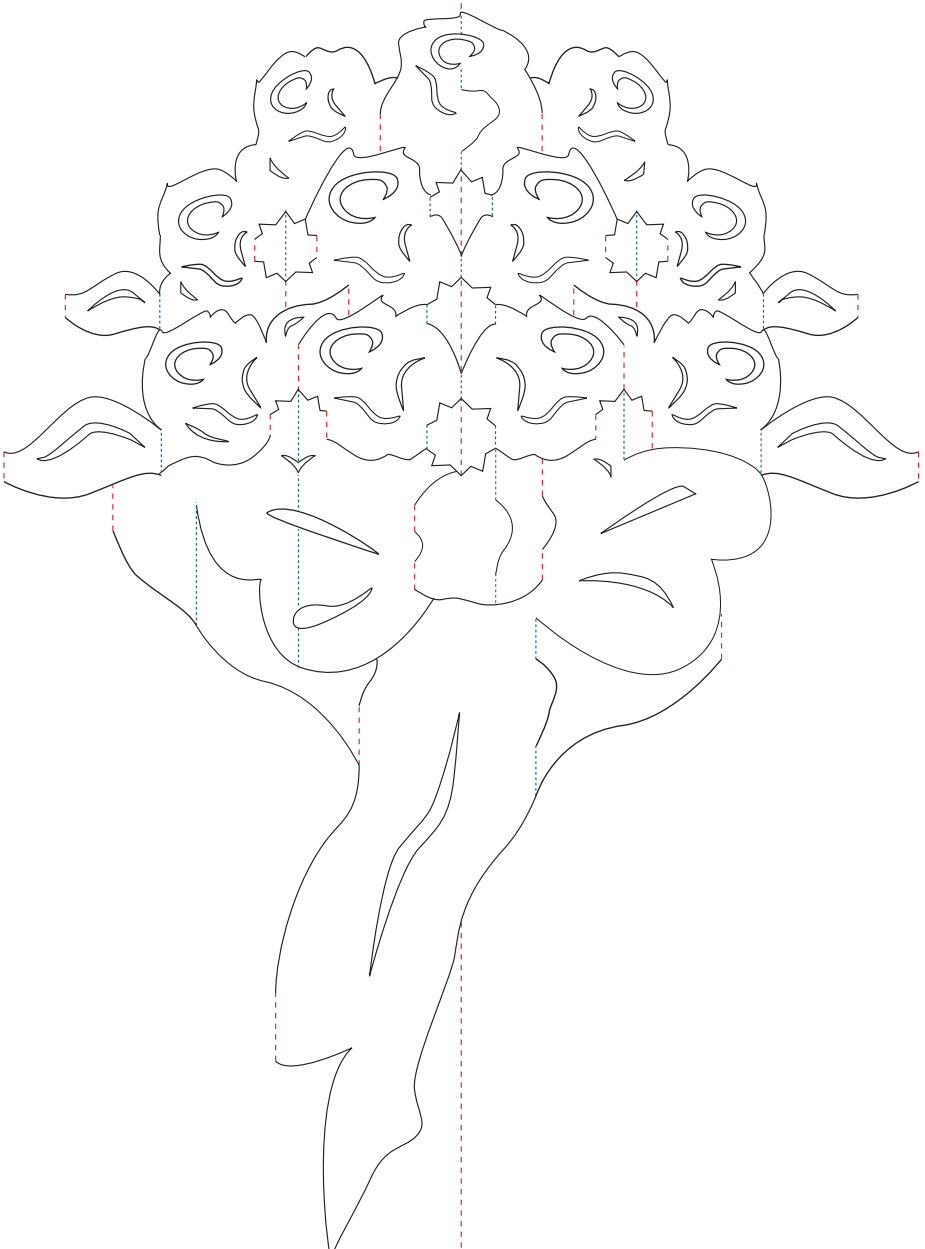


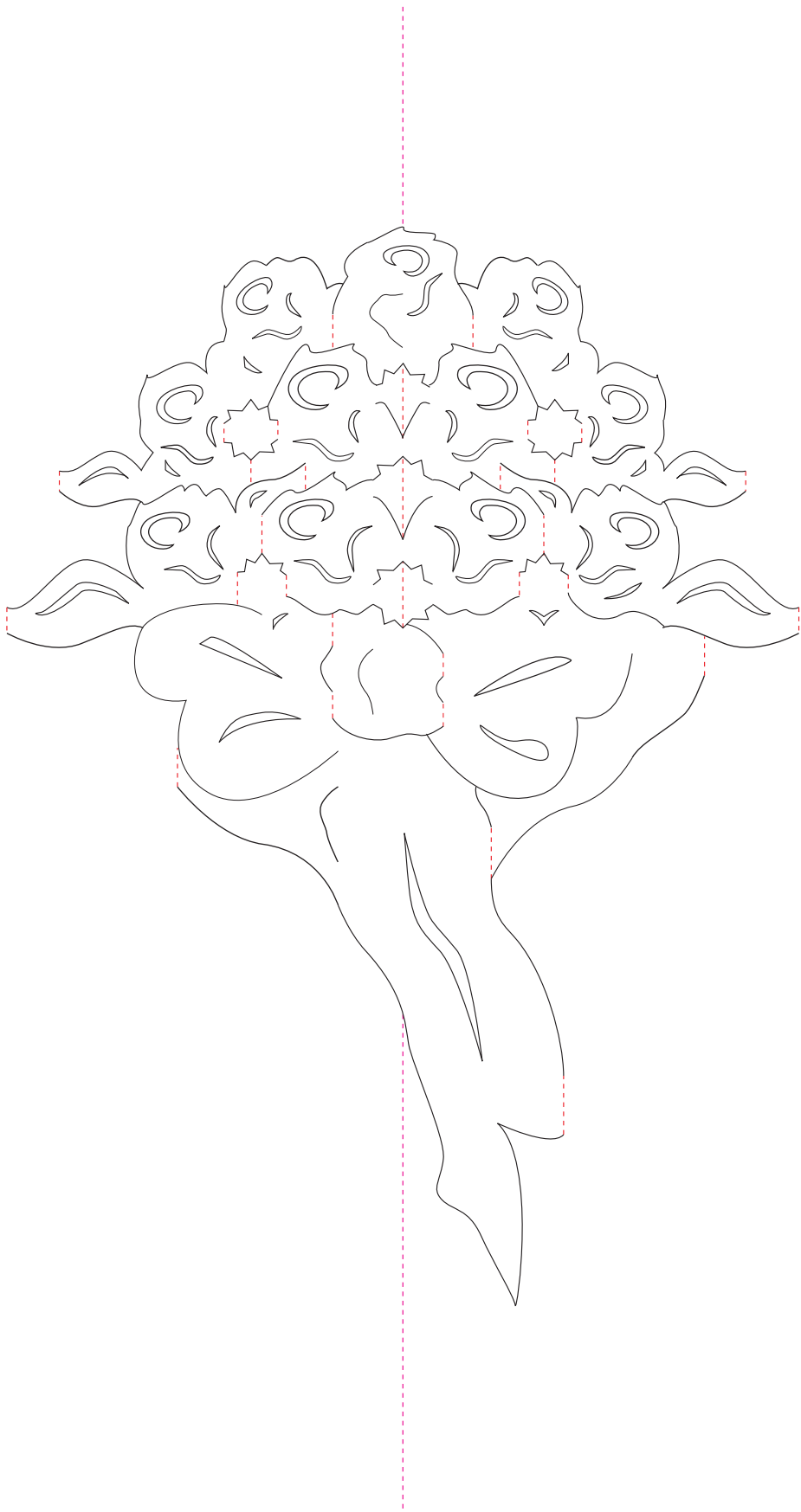
26.2 cm



8. Flower Bouquet

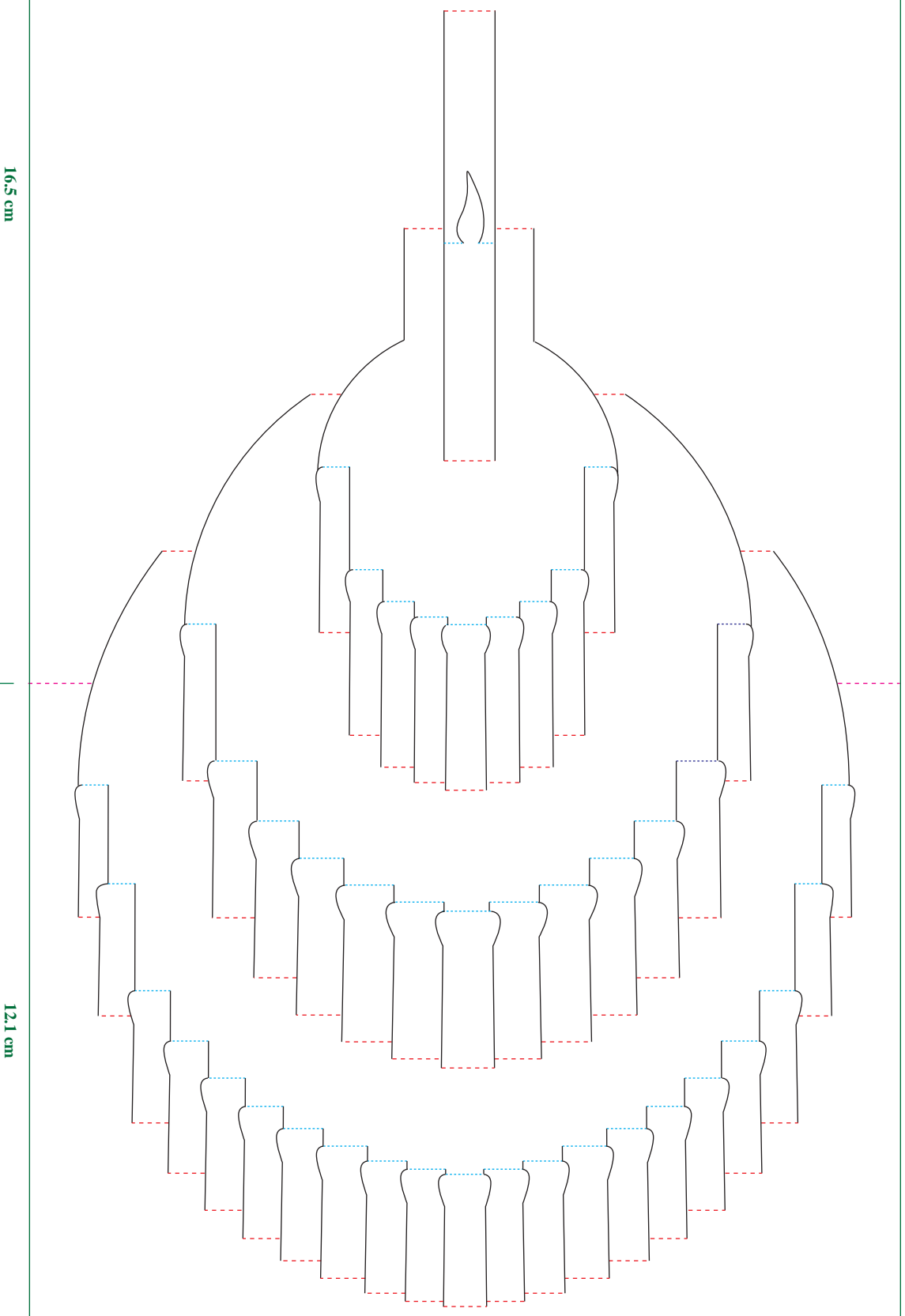


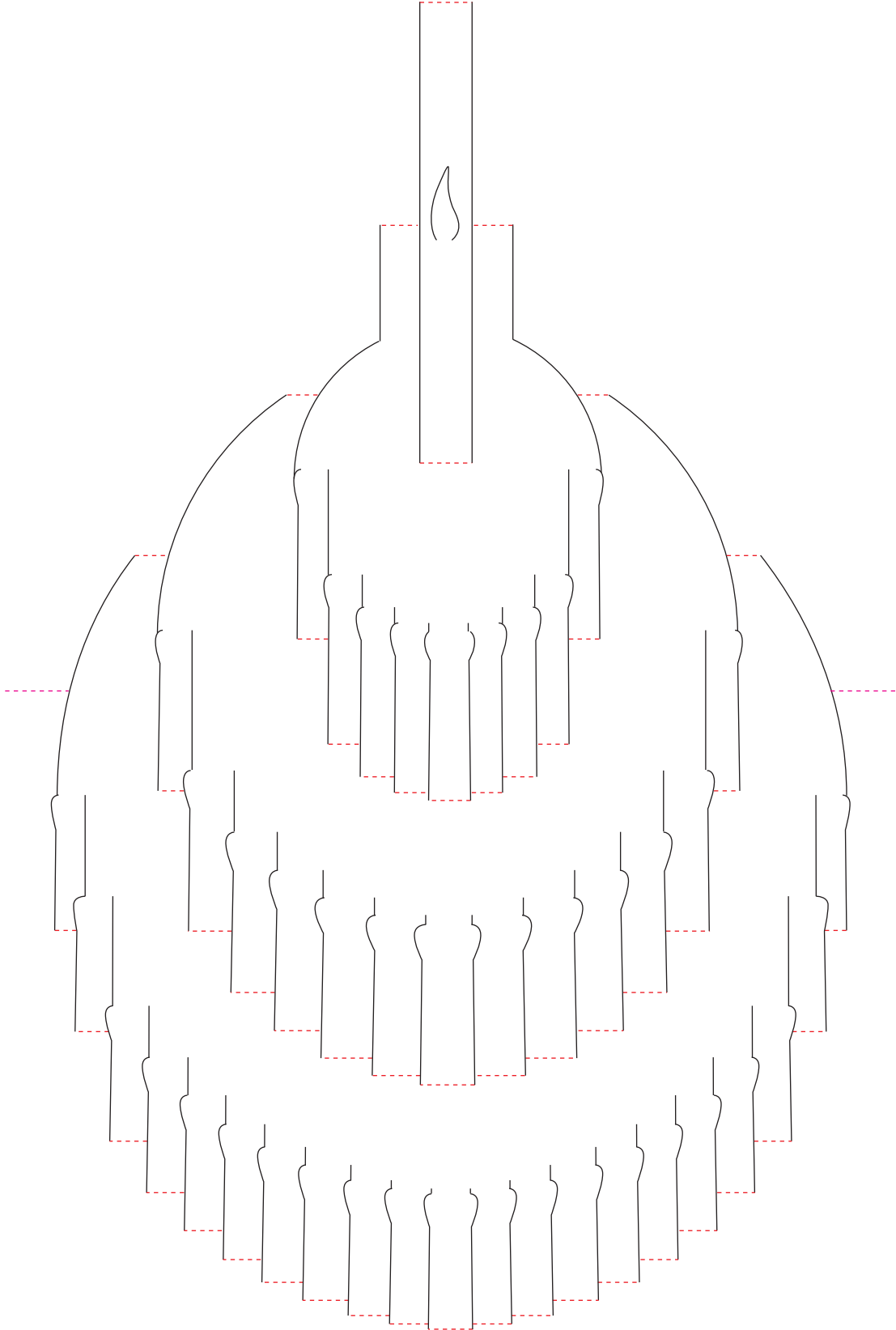




9. Birthday Cake

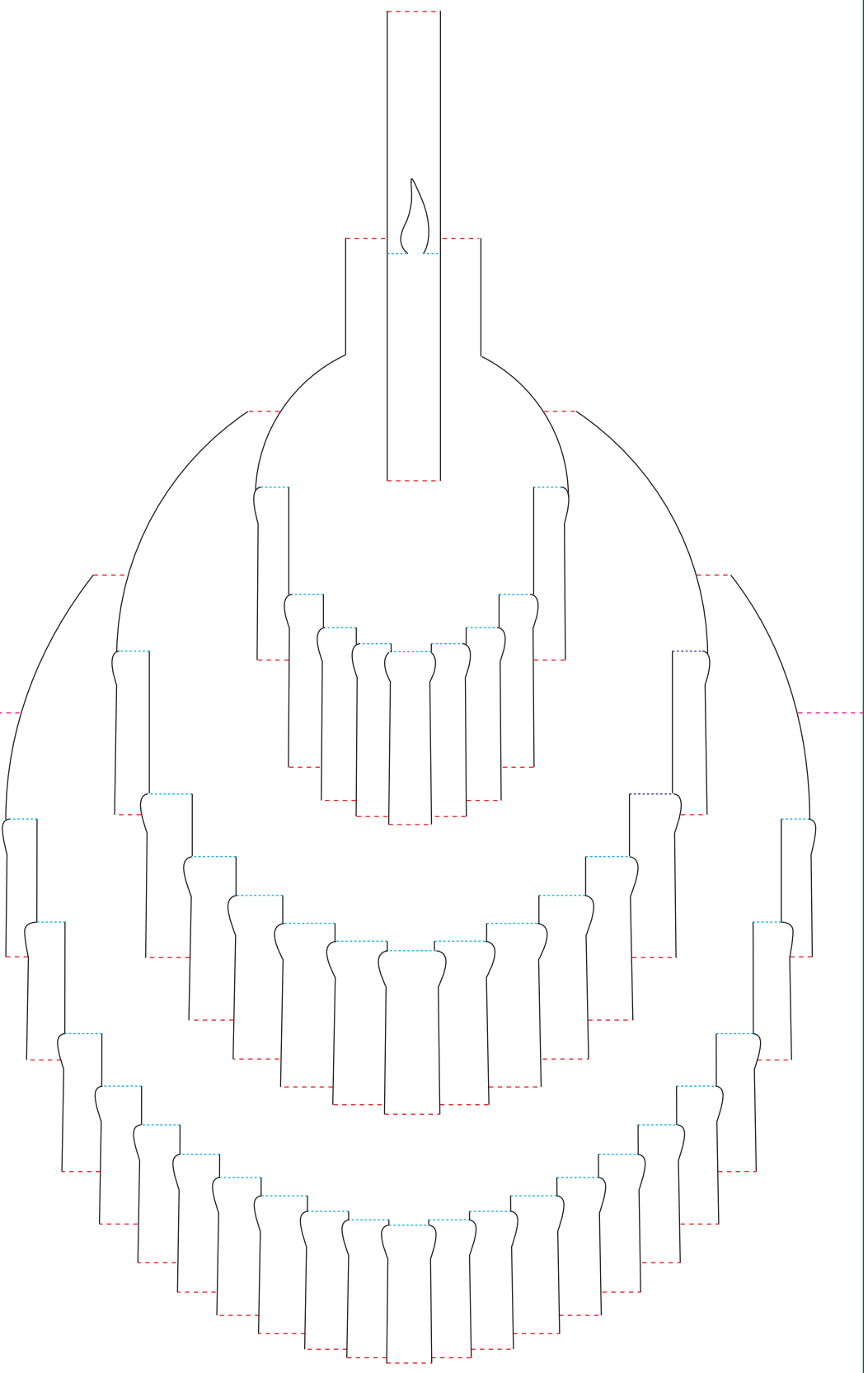






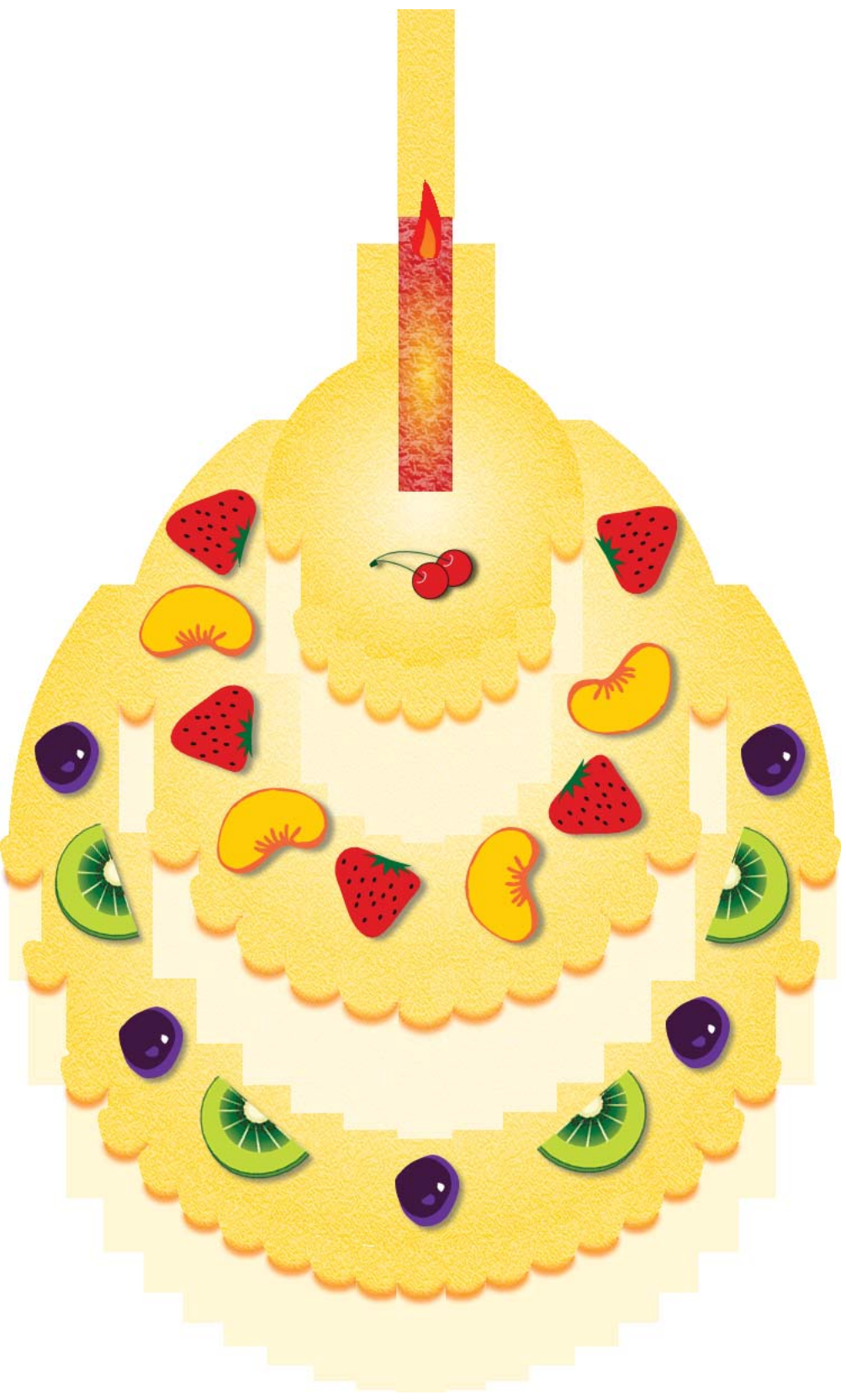
10. Birthday Cake(color)

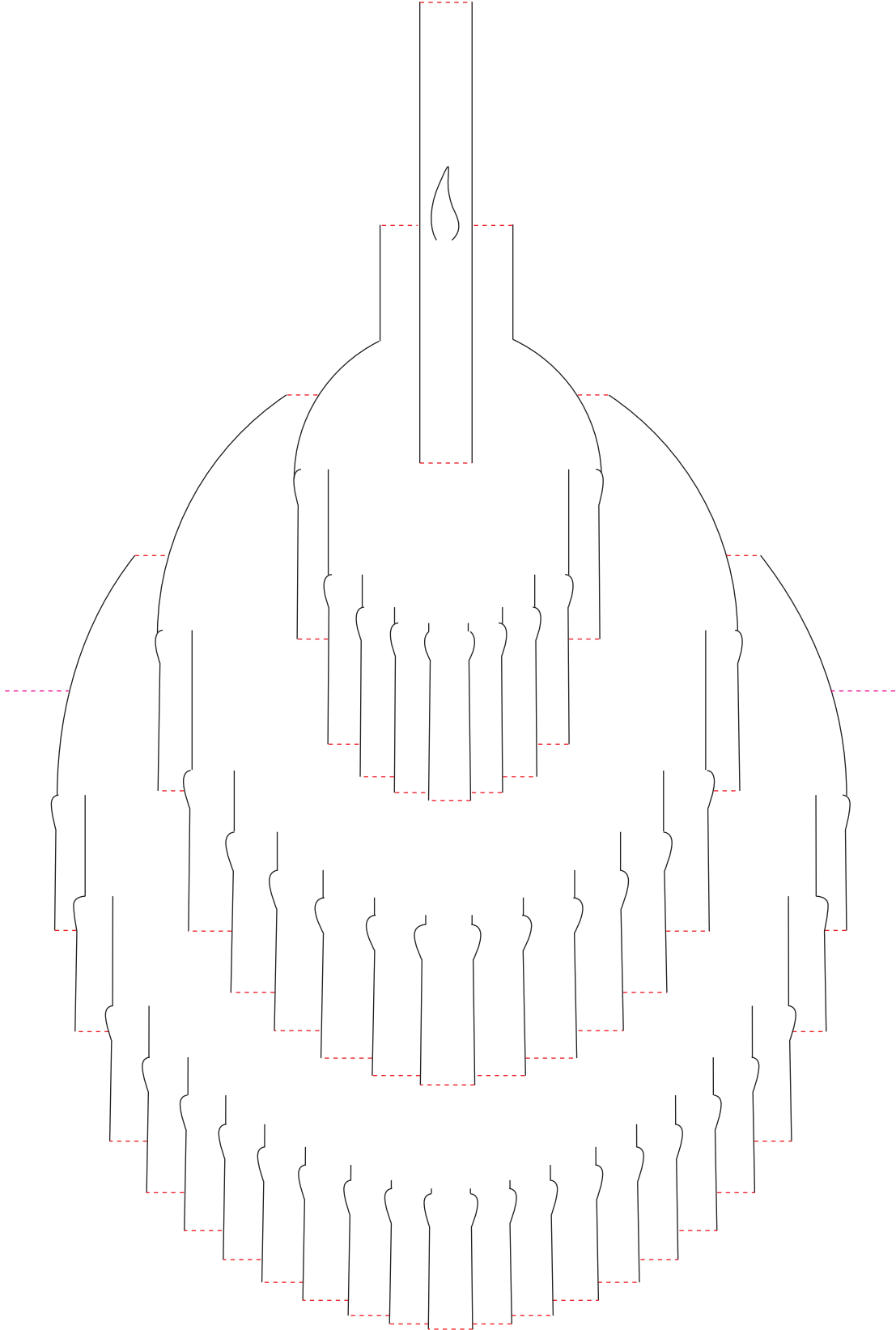




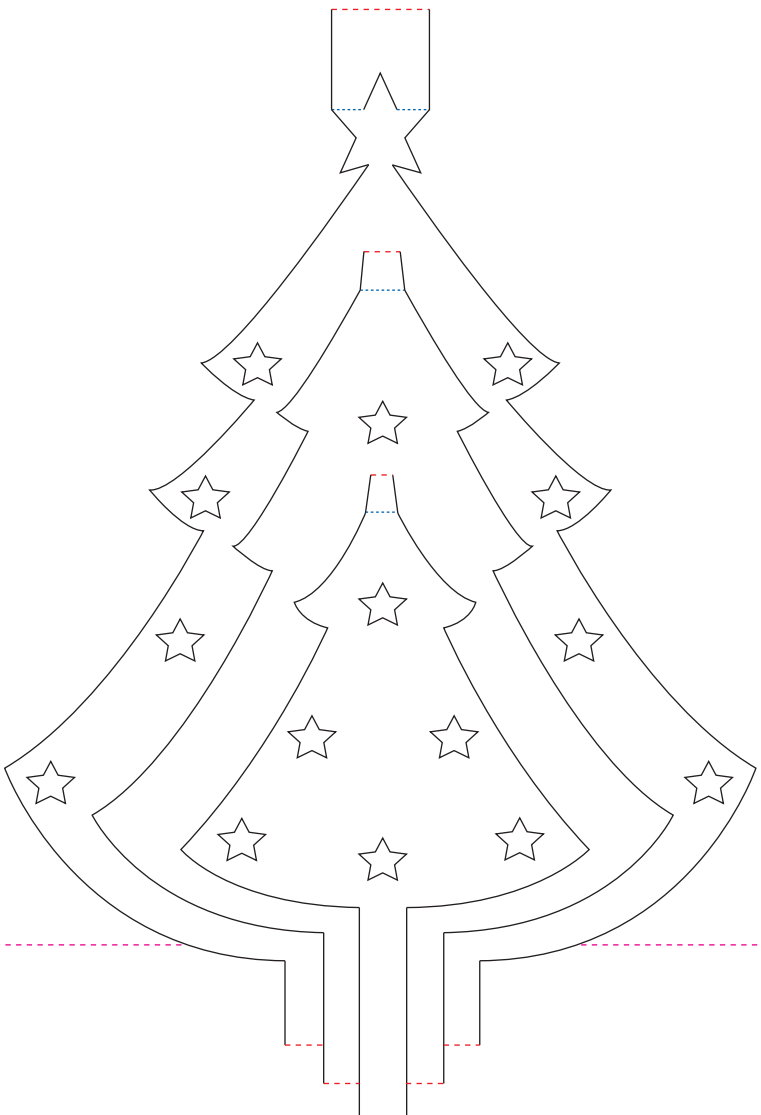
16.5 cm

12.1 cm

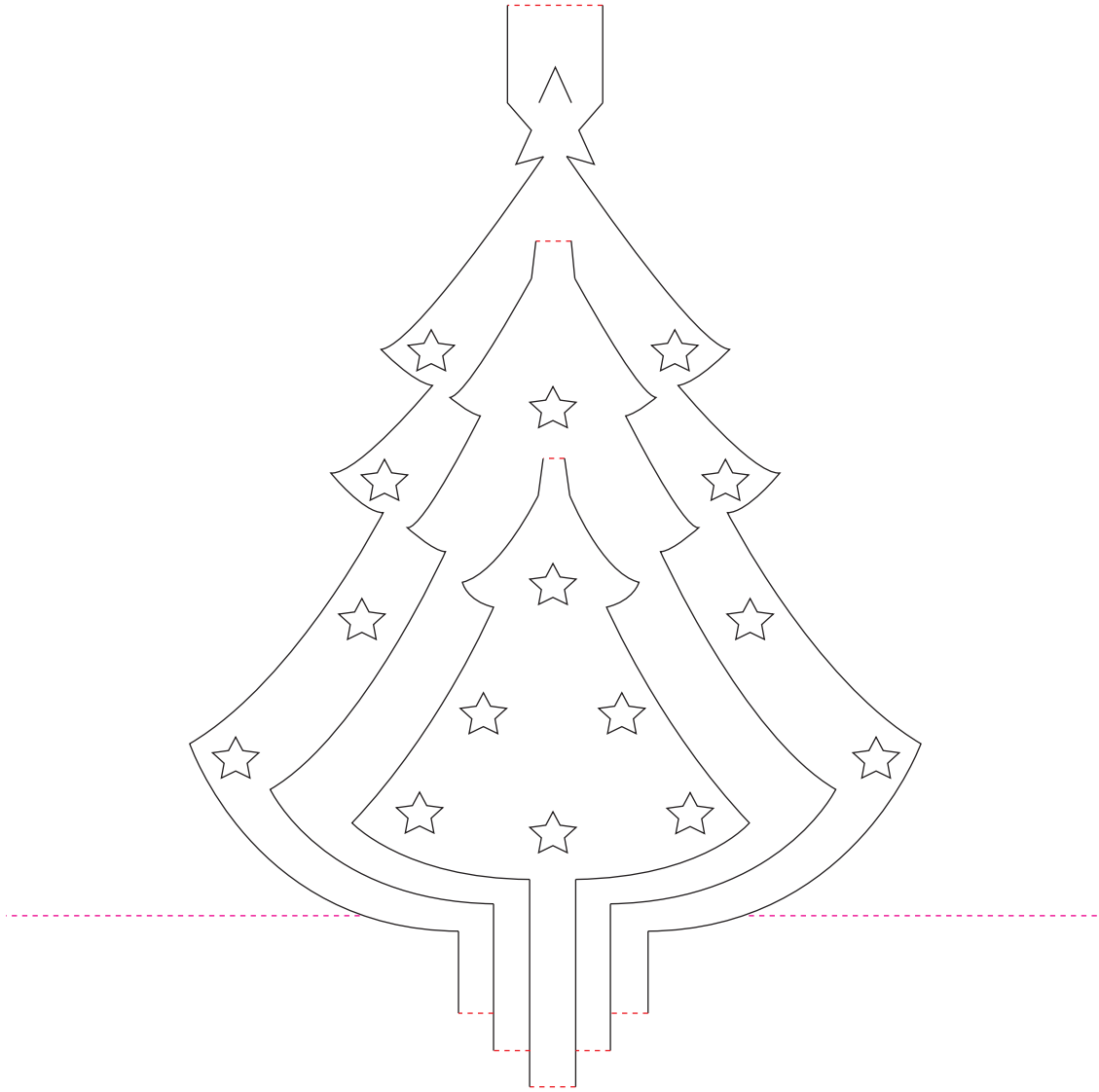






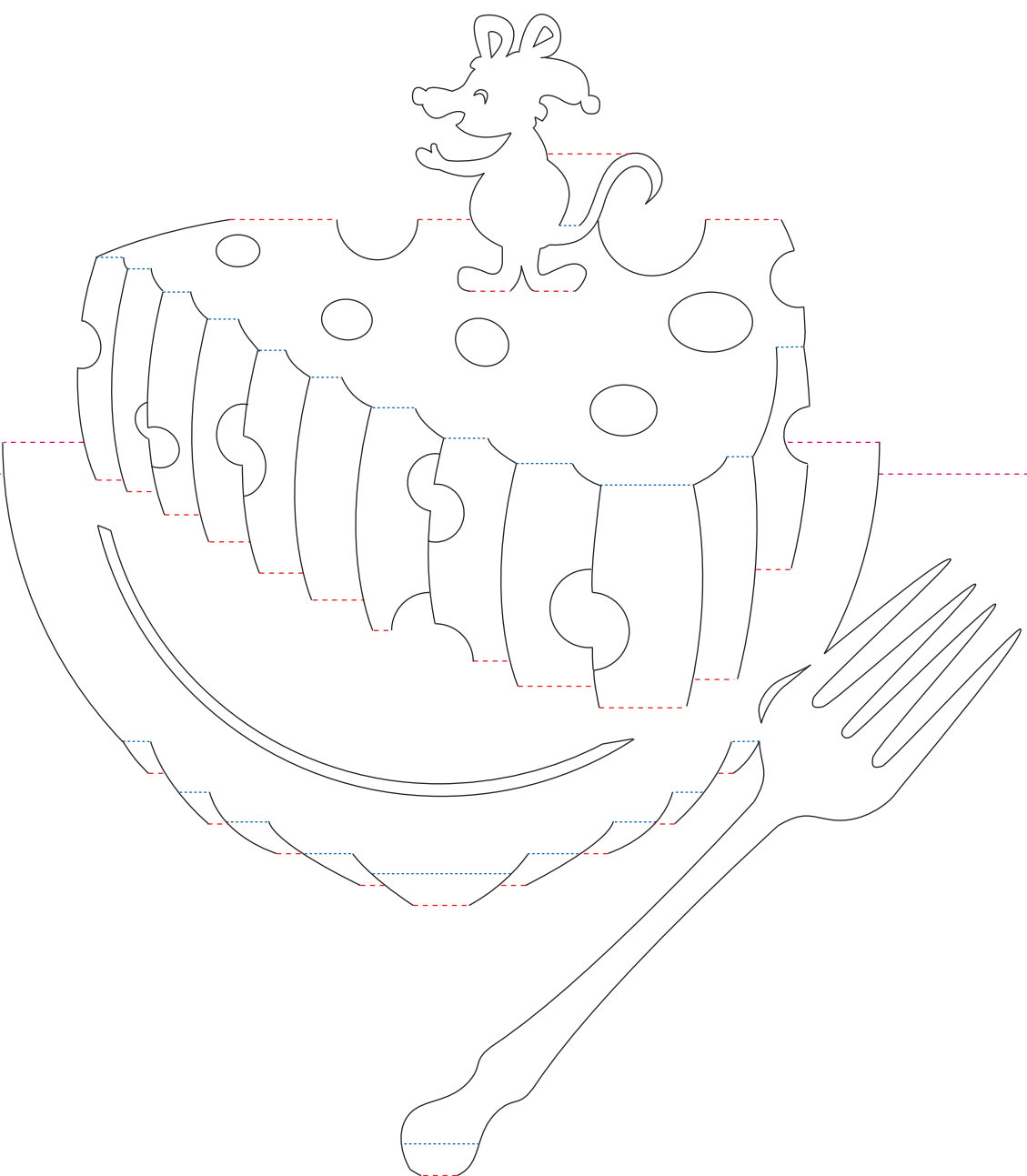


23.8 cm

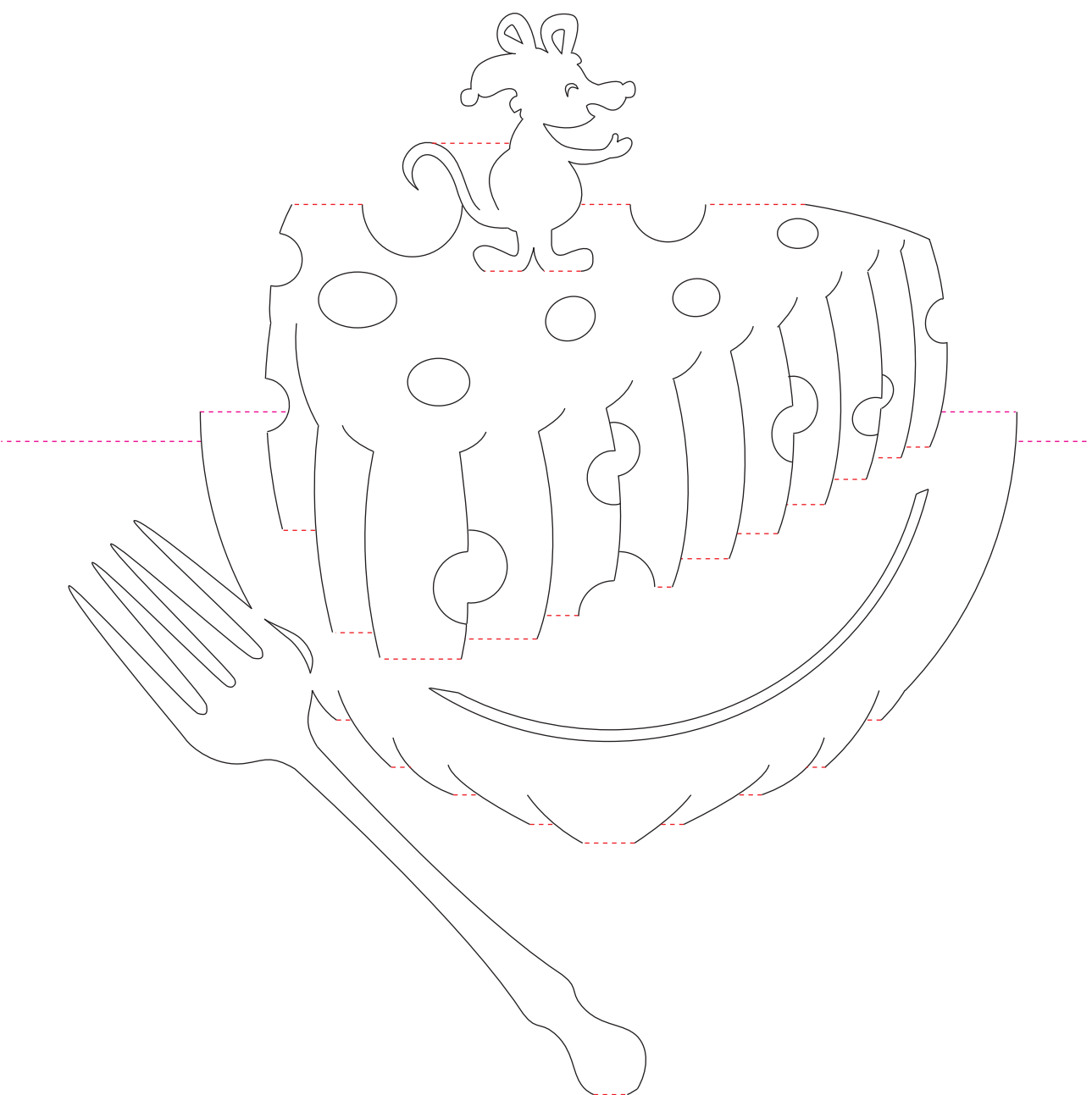


12. Santa Mouse

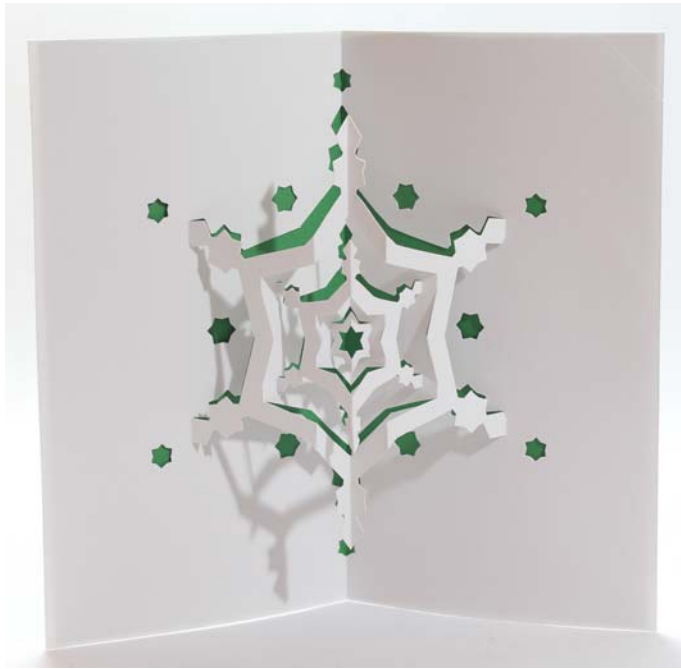


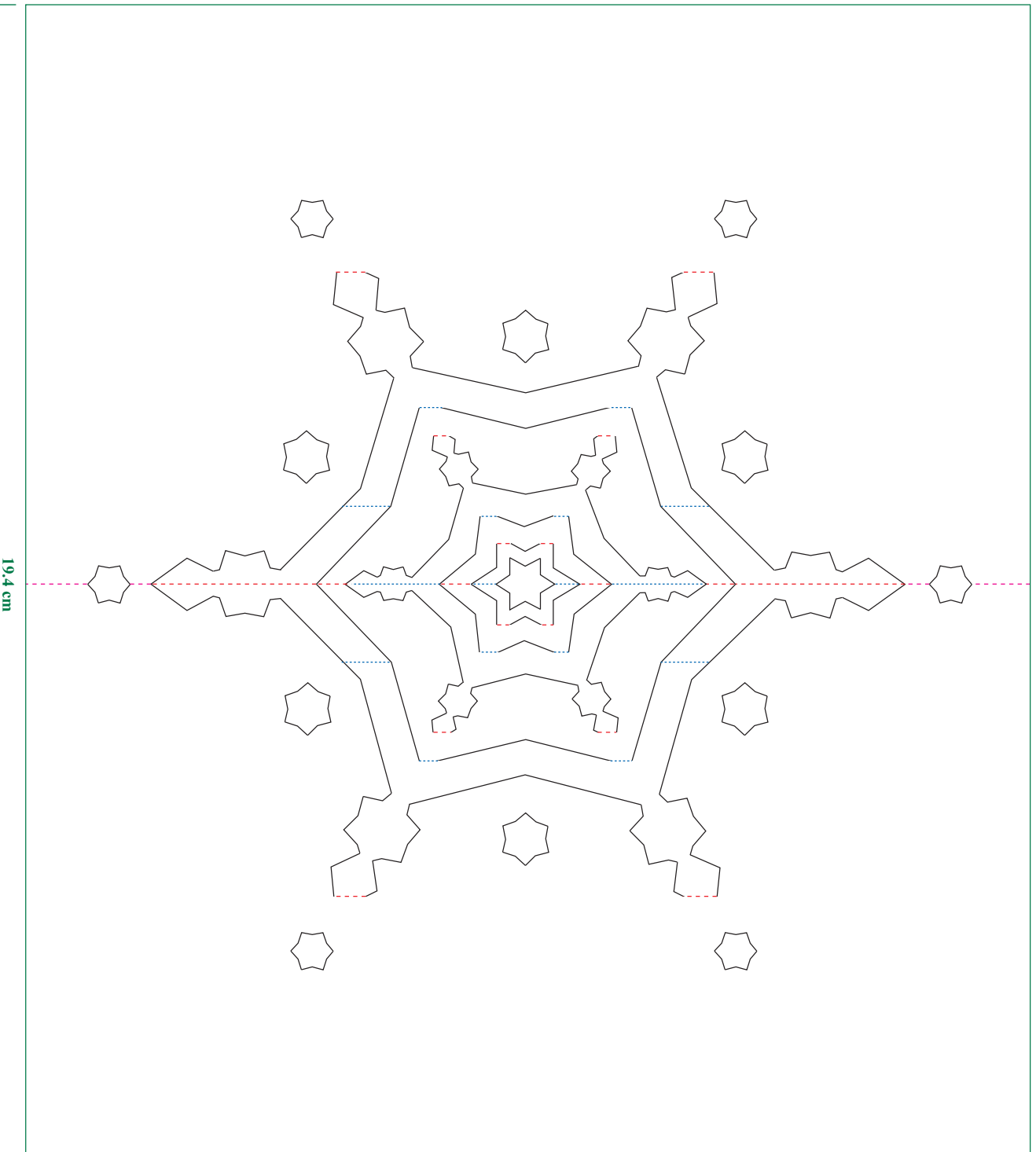


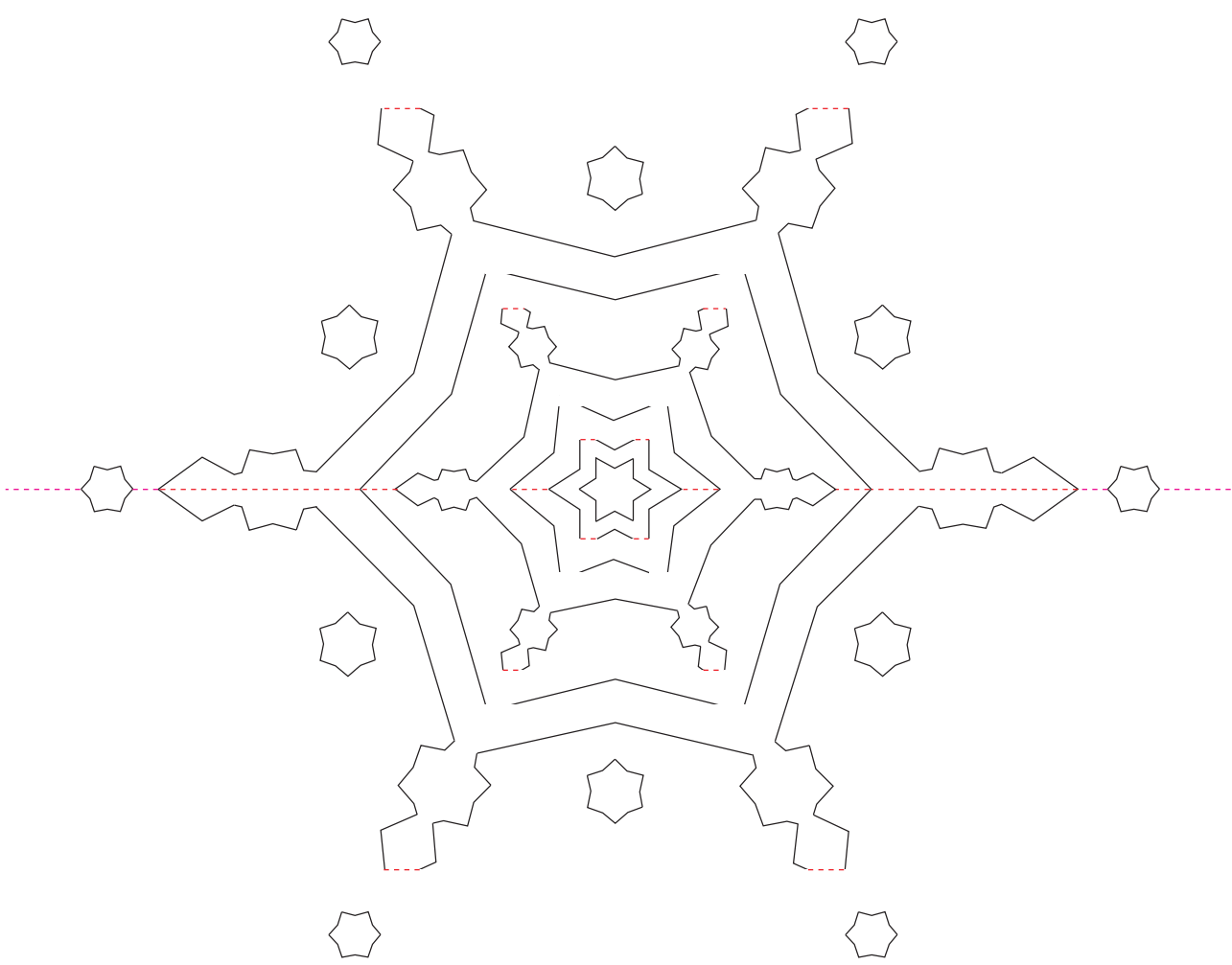
24.6 cm



13. Snowflake

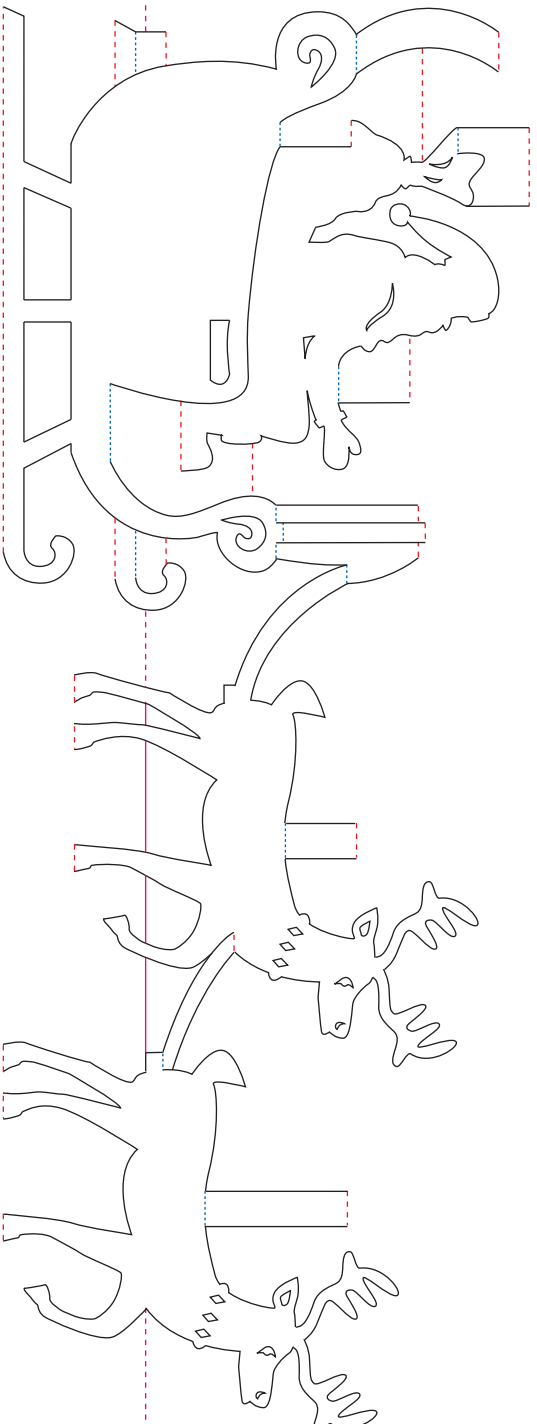


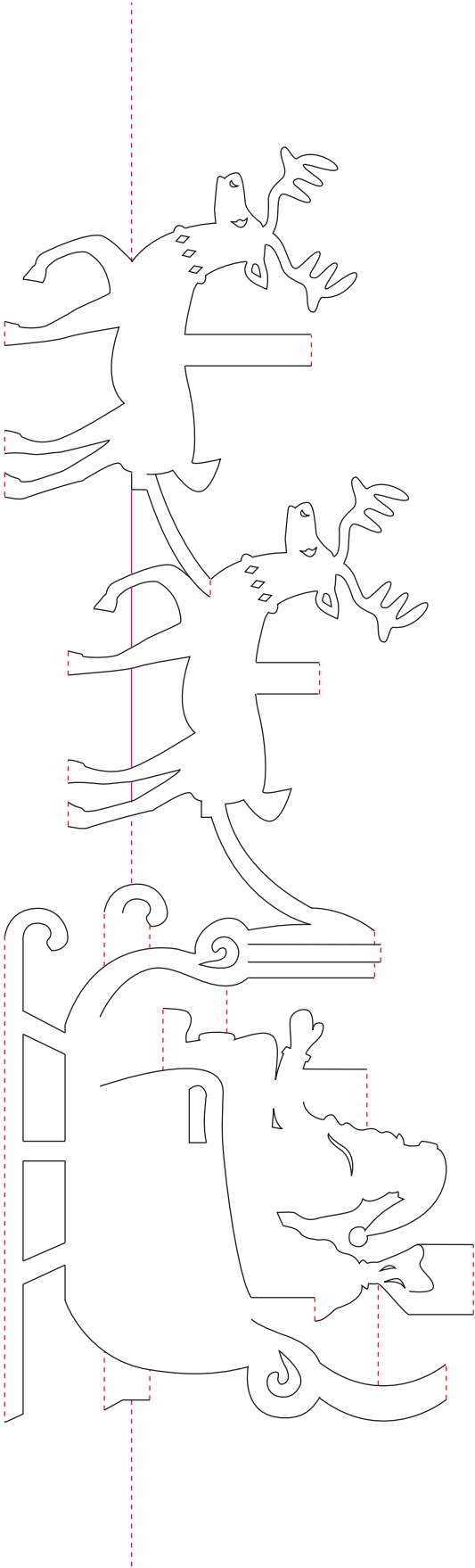




14. Santa & Reindeer







II. Instructions for 180° Christmas Tree

Parts:

1 **A**, 1 **B**, **C** × 4, **D** × 4, 1 **E**, 1 **F**, 1 **G**, 1 **H**



Interlocking steps:

Step 1:

A1 - **B1**, then **A2** - **B2** (see pic. 2)

Step 2:

C1 - **A4**, then **C2** - **A3** (see pic. 3)

Step 3:

C1 - **B4**, then **C2** - **B3**

C5 - adjacent **C3**, then **C6** - adjacent **C4** (see pic. 4)

Step 4:

C1 - **A4**, then **C2** - **A3**

C5 - adjacent **C3**, then **C6** - adjacent **C4**

Step 5:

C1 - **B4**, then **C2** - **B3**

C5 - adjacent **C3**, then **C6** - adjacent **C4**

C3 - adjacent **C5**, then **C4** - adjacent **C3**



Step 6:

D1– A5, then D2–A6
D3–C7, then D3–C7

Step 7:

D1– B5, then D2–B6
D3–C7, then D3–C7

Step 8:

D1– A5, then D2–A6
D3–C7, then D3–C7

Step 9:

D1– B5, then D2–B6
D3–C7, then D3–C7

Step 10:

F2– B7
E2– A7

Step 11:

F2– B7
E2– A7, then F3– E1

Step 12:

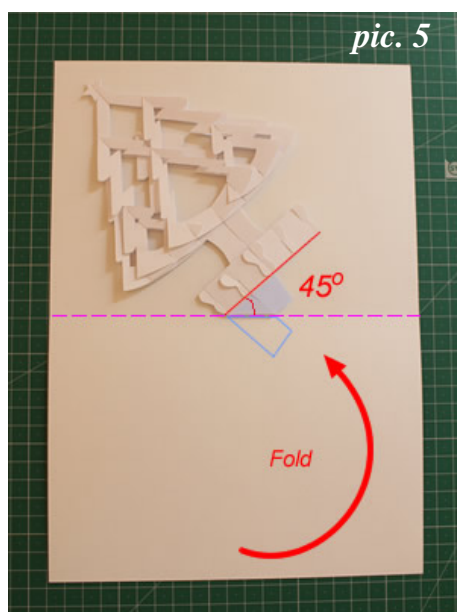
H2– A7, then H3–F1
G2– B7, then G1–E3
H1– G3

Step 13:

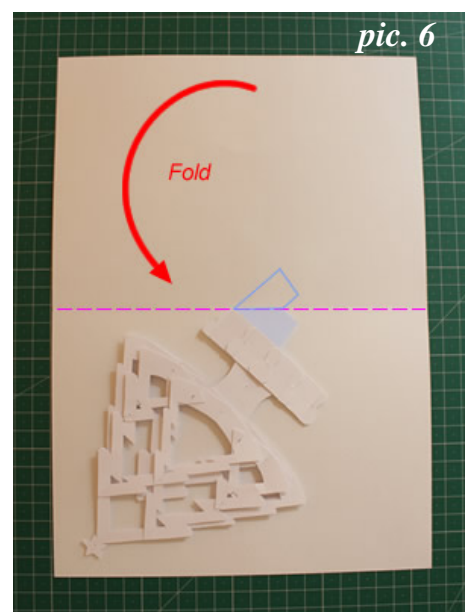
Decorate the Christmas tree if required.

Step 14:

- Prepare a base paper;
- Create a valley fold;
- Fold and unfold the base paper along the valley fold line;
- Position the tree to the base paper in a way that the tree bottom at a angle around 45° with the main fold line. Use some double sided tapes or glue to affix to the base paper. (see pic. 5 and pic. 6)



then unfold
→

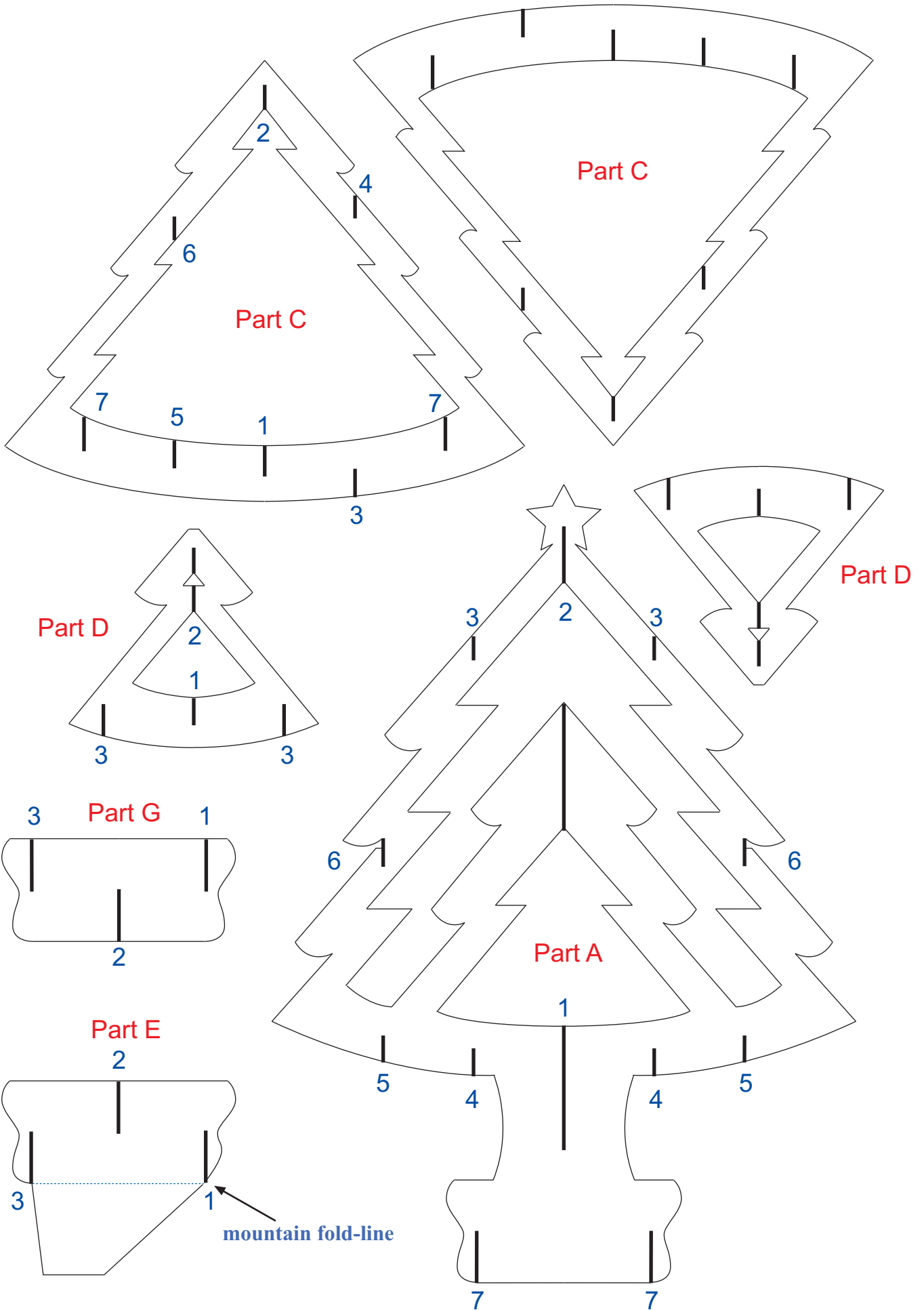


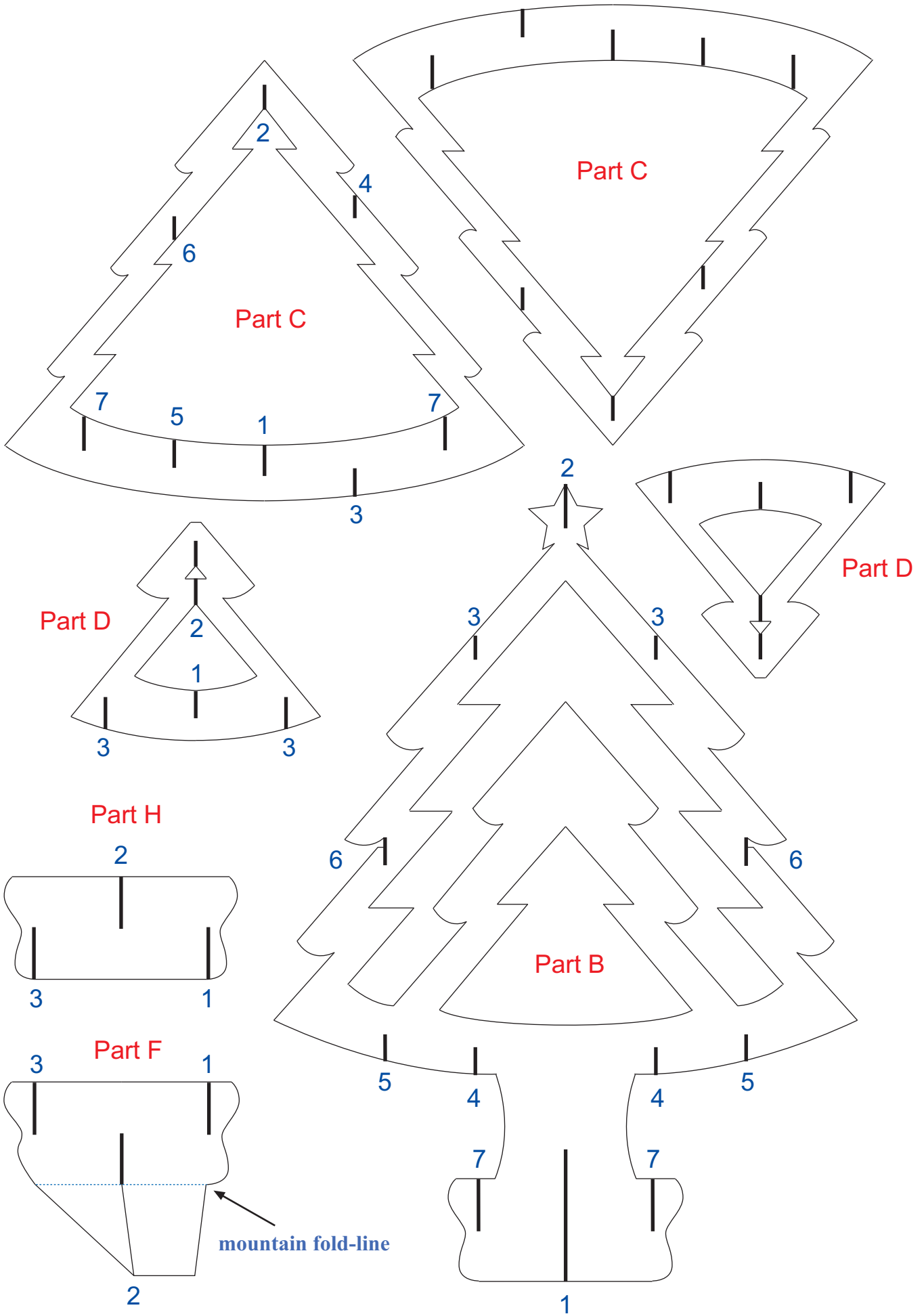
15. 180° Christmas Tree



15. 180° Christmas Tree





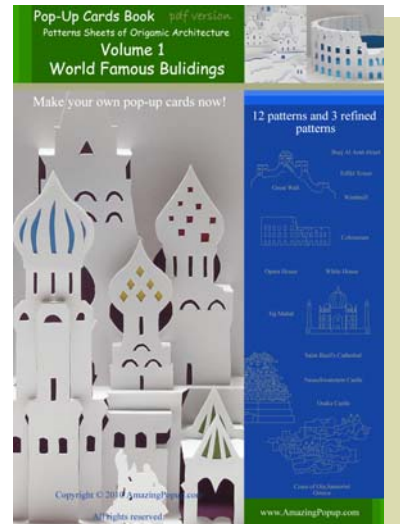


THANK YOU for buying Pop-up cards Ebook Volume 3 "Special Occasions"!

The End

Volume 1 World Famous Buildings

- | | |
|-------------------------|--|
| 1. Burj Al Arab Hotel | 9. Taj Mahal |
| 2. Eiffel Tower | 10. Taj Mahal(refined) |
| 3. Great Wall | 11. Saint Basil's Cathedral |
| 4. Windmill | 12. Neuschwanstein Castle |
| 5. Opera House | 13. Neuschwanstein Castle(refined) |
| 6. White House | 14. Osaka Castle |
| 7. White House(refined) | 15. Coast of Oia,Santorini Greece |
| 8. Colosseum | 16. Coast of Oia,Santorini Greece(color) |



Volume 2 Assorted Pop-up Cards

- | | |
|----------------|----------------------|
| 1. Doves | 8. Coral Reef Fishes |
| 2. Butterfly | 9. Sailing Yacht |
| 3. Tulips | 10. Cinderella Coach |
| 4. Kitten | 11. Ferris Wheel |
| 5. Dolphins | 12. Steam Locomotive |
| 6. Peacock | 13. Racing Car |
| 7. Little Farm | 14. Titanic |



website : www.amazingpopup.com